

**NOTICE!!**

**These documents have been scanned!**

**Do not place un-scanned documents beneath this notice!**

**Do not remove this notice from this file!**

GPO Jacket No. 560-102  
Print Order 61540  
Rise Business Services, LLC  
Job=AZ15 5/14/2019



Box Number= AZ15049



Claim Begin-End: AMC414552-AMC414567

1 Initial Receipt



AZ15049-10

AMC414434-AMC414683

**NO  
DOCUMENTS  
FOUND**

NO DOCUMENTS FOUND  
NO DOCUMENTS FOUND



**NOTICE!!**

**These documents have been scanned!**

**Do not place un-scanned documents beneath this notice!**

**Do not remove this notice from this file!**

GPO Jacket No. 560-102  
Print Order 61540  
Rise Business Services, LLC  
Job=AZ15 5/14/2019



Box Number= AZ15049



Claim Begin-End: AMC414552-AMC414567

2 Correspondence



AZ15049-10

AMC414434-AMC414683

AMC 414552

Sent USPS Certified Mail

July 26, 2019

To: United States Department of Interior  
Bureau of Land Management  
Arizona State Office  
One North Central Avenue  
Suite 800  
Phoenix, AZ 85004-4427

Fr: AJA Mining LLC  
10923 Vallerosa Street  
Las Vegas, NV 89141

Re: AMC414558 Claim AJA-24

We are dropping AMC414558 (AJA-24) mineral lode claim as of today July 26<sup>th</sup> 2019 and will not be make any further lease payments going forward.

Sincerely,

*Thomas Arkoosh*

Thomas Arkoosh  
Manager  
AJA Mining LLC  
702-328-5071

cc: John Arkoosh  
Keith Jay  
Joe Hart



RECEIVED  
BLM AZ STATE OFFICE  
2019 AUG -2 A 8:05  
PHOENIX, ARIZONA



# United States Department of the Interior

BUREAU OF LAND MANAGEMENT

Arizona State Office

One North Central Avenue, Suite 800

Phoenix, Arizona 85004-4427

[www.blm.gov/az/](http://www.blm.gov/az/)

OCT 07 2016



In Reply Refer To:

3800 (9200) RM

AMC413510, AMC414552

CERTIFIED MAIL - RETURN RECEIPT REQUESTED No. 7016 1370 0001 2495 2820

## DECISION

AJA MINING LLC

10923 VALLEROSA ST

LAS VEGAS, NV 89141-3927

: This decision affects those claims shown  
: on the attached list(s).  
:

---

SEE ENCLOSURE FOR LIST OF CLAIMS

---

## MINING CLAIMS DECLARED FORFEIT

The mining claims listed above have been declared forfeit as of September 1, 2016, for failure to timely file the required maintenance fee payment or small miner's maintenance fee waiver (waiver).

Claimants are required to pay an annual non-refundable maintenance fee of \$155 per 20 acres or portion thereof, or submit a waiver, on or before September 1 of each year. These requirements were established by 30 U.S.C. 28f-1, as amended, and 43 CFR 3834 and 3835.

Our records do not show receipt of a maintenance fee payment or small miner waiver filed on or before the due date. Therefore, the claims listed above are forfeit.

## Reclamation Requirements

This decision does not relieve you of the liability for reclamation of all areas disturbed by your activities on lands covered by the subject mining claim(s) and/or site(s). After you complete the reclamation, you must notify the authorized officer of the appropriate surface managing agency so that the authorized officer may conduct a final site inspection and determine whether you may be released from liability. If you fail to reclaim the land to the satisfaction of the authorized officer, the surface management agency may cite you for noncompliance under its surface management regulations. For land administered by the Bureau of Land Management (BLM), if you fail to



reclaim the land to the satisfaction of the authorized officer as required in 43 CFR Subpart 3809, BLM will issue an order of noncompliance under 43 CFR 3809.601(a). If you fail to comply with the non-compliance order, BLM may take further action under 43 CFR 3809.604. Failure to conduct reclamation is a prohibited act that may subject you to criminal penalties. See 43 CFR 3809.605(h) and 43 CFR 3809.700.

### **Appeal Procedures**

This decision may be appealed to the Interior Board of Land Appeals, Office of the Secretary, in accordance with the regulations contained in 43 CFR, Part 4, and the enclosed Form 1842-1. If an appeal is taken, your notice of appeal must be filed in this office (at the above address) within 30 days from receipt of this decision. The appellant has the burden of showing that the decision appealed from is in error.

If you wish to file a petition pursuant to regulation 43 CFR 4.21 (58 FR 4939, January 19, 1993) for a stay of the effectiveness of this decision during the time that your appeal is being reviewed by the Board, the petition for a stay must accompany your notice of appeal. A petition for a stay is required to show sufficient justification based on the standards listed below. Copies of the notice of appeal and petition for a stay **must** also be submitted to each party named in this decision and to the Interior Board of Land Appeals and to the appropriate Office of the Solicitor (see 43 CFR 4.413) at the same time the original documents are filed with this office. If you request a stay, you have the burden of proof to demonstrate that a stay should be granted.

### **Standards for Obtaining a Stay**

Except as otherwise provided by law or other pertinent regulation, a petition for a stay of a decision pending appeal shall show sufficient justification based on the following standards:

- (1) The relative harm to the parties if the stay is granted or denied,
- (2) The likelihood of the appellant's success on the merits,
- (3) The likelihood of immediate and irreparable harm if the stay is not granted, and
- (4) Whether the public interest favors granting the stay.

Please include your AMC serial number(s) on all correspondence. If additional information is required, please call RéAnn Myers at 602-417-9413.



Rebecca Heick  
Deputy State Director  
Lands, Minerals, and Energy Division

Enclosure

AJA MINING LLC  
10923 VALLEROSA ST  
LAS VEGAS NV 89141-3927

LEAD FILE NUMBER	CLAIM NUMBER	CLAIM NAME
AMC413510	AMC413511	AJA-2
AMC413510	AMC413513	AJA-4
AMC413510	AMC413515	AJA-6
AMC413510	AMC413517	AJA-8
AMC413510	AMC413519	AJA-10
AMC413510	AMC413520	AJA-11
AMC413510	AMC413521	AJA-12
AMC414552	AMC414557	AJA-23
AMC414552	AMC414563	AJA-29
AMC414552	AMC414564	AJA-30
AMC414552	AMC414565	AJA-31
AMC414552	AMC414566	AJA-32
AMC414552	AMC414567	AJA-33

[English](#)[Customer Service](#)[USPS Mobile](#)[Register / Sign In](#)

## USPS Tracking®

[Still Have Questions?](#)[Browse our FAQs ›](#)[Get Easy Tracking Updates ›](#)  
[Sign up for My USPS.](#)

Tracking Number: 70161370000124952820

### Product & Tracking Information

Postal Product:

Features:  
Certified Mail™

### Available Actions

DATE & TIME	STATUS OF ITEM	LOCATION
October 21, 2016 , 2:14 pm	Delivered, Individual Picked Up at Postal Facility	LAS VEGAS, NV 89123

Your item was picked up at a postal facility at 2:14 pm on October 21, 2016 in LAS VEGAS, NV 89123.

October 13, 2016 , 1:11 pm	Notice Left (No Authorized Recipient Available)	LAS VEGAS, NV 89141
October 13, 2016 , 3:12 am	Departed USPS Facility	LAS VEGAS, NV 89199
October 12, 2016 , 2:18 pm	Arrived at USPS Facility	LAS VEGAS, NV 89199
October 12, 2016 , 8:00 am	Departed USPS Facility	PHOENIX, AZ 85026
October 11, 2016 , 11:32 pm	Arrived at USPS Facility	PHOENIX, AZ 85026

### Track Another Package

Tracking (or receipt) number

[Track It](#)

### Manage Incoming Packages

Track all your packages from a dashboard.  
No tracking numbers necessary.[Sign up for My USPS ›](#)

#### HELPFUL LINKS

[Contact Us](#)  
[Site Index](#)  
[FAQs](#)

#### ON ABOUT.USPS.COM

[About USPS Home](#)  
[Newsroom](#)  
[USPS Service Updates](#)  
[Forms & Publications](#)  
[Government Services](#)  
[Careers](#)

#### OTHER USPS SITES

[Business Customer Gateway](#)  
[Postal Inspectors](#)  
[Inspector General](#)  
[Postal Explorer](#)  
[National Postal Museum](#)  
[Resources for Developers](#)

#### LEGAL INFORMATION

[Privacy Policy](#)  
[Terms of Use](#)  
[FOIA](#)  
[No FEAR Act EEO Data](#)

Copyright © 2016 USPS. All Rights Reserved.



**NOTICE!!**

**These documents have been scanned!**

**Do not place un-scanned documents beneath this notice!**

**Do not remove this notice from this file!**

GPO Jacket No. 560-102  
Print Order 61540  
Rise Business Services, LLC  
Job=AZ15 5/14/2019



Box Number= AZ15049



Claim Begin-End: AMC414552-AMC414567

3 Transfers



AZ15049-10

AMC414434-AMC414683

**NO  
DOCUMENTS  
FOUND**

NO DOCUMENTS FOUND  
NO DOCUMENTS FOUND



**NOTICE!!**

**These documents have been scanned!**

**Do not place un-scanned documents beneath this notice!**

**Do not remove this notice from this file!**

GPO Jacket No. 560-102  
Print Order 61540  
Rise Business Services, LLC  
Job=AZ15 5/14/2019



Box Number= AZ15049



Claim Begin-End: AMC414552-AMC414567

4 Miscellaneous



AZ15049-10

AMC414434-AMC414683



**United States Department of the Interior**  
**Bureau of Land Management**  
 LANDS/RECREATION & PLANNING  
 ONE N CENTRAL AVE  
 PHOENIX, AZ 85004 -2203  
 Phone: 602-417-9200

Receipt

No:

2539209

Transaction #: 2617773

Date of Transaction: 03/27/2012

**ENTERED INTO COMPUTER**

CUSTOMER:

MAR 30 2012 *pb*

AJA MINING LLC  
 10923 VALLEROSA ST  
 LAS VEGAS, NV 89141-3927 US

LINE #	QTY	DESCRIPTION	REMARKS	UNIT PRICE	TOTAL
1	16.00	LOCATABLE MINERALS / MINING CLAIMS- NEW, UNADJUD, ONE OR MORE AUTH NOS / NEW MINING CLAIM LOCATION FEE \$34 <b>CASES:</b> AMC414552/\$34.00, AMC414553/\$34.00, AMC414554/\$34.00, AMC414555/\$34.00, AMC414556/\$34.00, AMC414557/\$34.00, AMC414558/\$34.00, AMC414559/\$34.00, AMC414560/\$34.00, AMC414561/\$34.00, AMC414562/\$34.00, AMC414563/\$34.00, AMC414564/\$34.00, AMC414565/\$34.00, AMC414566/\$34.00, AMC414567/\$34.00		- n/a -	544.00
2	16.00	LOCATABLE MINERALS / MINING CLAIMS- NEW, UNADJUD, ONE OR MORE AUTH NOS / NEW MINING CLAIM MAINT FEE \$140 <b>CASES:</b> AMC414552/\$140.00, AMC414553/\$140.00, AMC414554/\$140.00, AMC414555/\$140.00, AMC414556/ \$140.00, AMC414557/\$140.00, AMC414558/\$140.00, AMC414559/\$140.00, AMC414560/\$140.00, AMC414561/ \$140.00, AMC414562/\$140.00, AMC414563/\$140.00, AMC414564/\$140.00, AMC414565/\$140.00, AMC414566/ \$140.00, AMC414567/\$140.00		- n/a -	2240.00
3	16.00	LOCATABLE MINERALS / MINING CLAIMS- NEW, UNADJUD, ONE OR MORE AUTH NOS / NEW MINING CLAIM PROCESSING FEE \$15 <b>CASES:</b> AMC414552/\$15.00, AMC414553/\$15.00, AMC414554/\$15.00, AMC414555/\$15.00, AMC414556/\$15.00, AMC414557/\$15.00, AMC414558/\$15.00, AMC414559/\$15.00, AMC414560/\$15.00, AMC414561/\$15.00, AMC414562/\$15.00, AMC414563/\$15.00, AMC414564/\$15.00, AMC414565/\$15.00, AMC414566/\$15.00, AMC414567/\$15.00		- n/a -	240.00
<b>TOTAL:</b>					<b>\$3,024.00</b>

PAYMENT INFORMATION

1	AMOUNT:	3024.00	POSTMARKED:	03/23/2012
	TYPE:	CHECK	RECEIVED:	03/27/2012
	CHECK NO:	1029		
	NAME:	AJA MINING LLC 10923 VALLEROSA ST LAS VEGAS NV 89141-3927 US		

REMARKS

This receipt was generated by the automated BLM Collections and Billing System and is a paper representation of a portion of the official electronic record contained therein.



**NOTICE!!**

**These documents have been scanned!**

**Do not place un-scanned documents beneath this notice!**

**Do not remove this notice from this file!**

GPO Jacket No. 560-102  
Print Order 61540  
Rise Business Services, LLC  
Job=AZ15 5/14/2019



Box Number= AZ15049



Claim Begin-End: AMC414552-AMC414567

5 Annual Filings



AZ15049-10

AMC414434-AMC414683



DEPARTMENT OF THE INTERIOR  
BUREAU OF LAND MANAGEMENT  
MINING CLAIMS

Run Date/Time: 9/11/2018

MC Maintenance Fees Paid Through the BLM Pay Portal  
(by Date Paid)

Page 27 Of 723

**CBS Receipt: 4240221**

Printed For Lead File # **AMC414552**

Agency Tracking ID: 1534792530

Assessment Year: 2019

Paid On: 8/20/2018

Number of BLM Serial Nr: 90

Total Amount Paid: \$13,950.00

Claim Name	BLM Serial No	Lead File No	Amount Paid
AJA-1	AMC413510	AMC413510	\$155.00
AJA-3	AMC413512	AMC413510	\$155.00
AJA-5	AMC413514	AMC413510	\$155.00
AJA-7	AMC413516	AMC413510	\$155.00
AJA-9	AMC413518	AMC413510	\$155.00
AJA-13	AMC413769	AMC413769	\$155.00
AJA-14	AMC414246	AMC414246	\$155.00
AJA-15	AMC414247	AMC414246	\$155.00
AJA-16	AMC414248	AMC414246	\$155.00
AJA-17	AMC414249	AMC414246	\$155.00
AJA-18	AMC414552	AMC414552	\$155.00
AJA-19	AMC414553	AMC414552	\$155.00
AJA-20	AMC414554	AMC414552	\$155.00
AJA-21	AMC414555	AMC414552	\$155.00
AJA-22	AMC414556	AMC414552	\$155.00
AJA-24	AMC414558	AMC414552	\$155.00
AJA-25	AMC414559	AMC414552	\$155.00
AJA-26	AMC414560	AMC414552	\$155.00
AJA-27	AMC414561	AMC414552	\$155.00
AJA-28	AMC414562	AMC414552	\$155.00
TUT-1	AMC415013	AMC415013	\$155.00
TUT-2	AMC415014	AMC415013	\$155.00
TUT-3	AMC415015	AMC415013	\$155.00
TUT-4	AMC415016	AMC415013	\$155.00

NO WARRANTY IS MADE BY BLM FOR USE OF THE DATA FOR PURPOSES NOT INTENDED BY BLM

**DEPARTMENT OF THE INTERIOR  
BUREAU OF LAND MANAGEMENT  
MINING CLAIMS**

Run Date/Time: 9/11/2018

**MC Maintenance Fees Paid Through the BLM Pay Portal  
(by Date Paid)**

Page 28 Of 723

TUT-5	AMC415017	AMC415013	\$155.00
TUT-6	AMC415018	AMC415013	\$155.00
TUT-7	AMC415019	AMC415013	\$155.00
TUT-8	AMC415020	AMC415013	\$155.00
TUT 9	AMC415597	AMC415597	\$155.00
TUT 10	AMC415598	AMC415597	\$155.00
TUT 11	AMC415599	AMC415597	\$155.00
TUT 12	AMC415600	AMC415597	\$155.00
TUT 13	AMC415601	AMC415597	\$155.00
TUT 14	AMC415602	AMC415597	\$155.00
TUT 15	AMC415603	AMC415597	\$155.00
TUT 16	AMC415604	AMC415597	\$155.00
TUT-17	AMC416173	AMC416173	\$155.00
TUT-18	AMC416174	AMC416173	\$155.00
TUT-19	AMC416175	AMC416173	\$155.00
TUT-20	AMC416176	AMC416173	\$155.00
TUT-21	AMC416177	AMC416173	\$155.00
TUT-22	AMC416178	AMC416173	\$155.00
TUT-23	AMC416179	AMC416173	\$155.00
TUT-24	AMC416180	AMC416173	\$155.00
TUT-25	AMC416181	AMC416173	\$155.00
TUT-26	AMC416182	AMC416173	\$155.00
TUT-27	AMC416183	AMC416173	\$155.00
TUT-28	AMC416184	AMC416173	\$155.00
TUT-29	AMC416646	AMC416646	\$155.00
TUT-30	AMC416647	AMC416646	\$155.00
TUT-31	AMC416648	AMC416646	\$155.00
TUT-32	AMC416649	AMC416646	\$155.00
TUT-33	AMC416650	AMC416646	\$155.00
TUT-34	AMC416651	AMC416646	\$155.00
TUT-35	AMC416652	AMC416646	\$155.00
TUT-36	AMC416653	AMC416646	\$155.00
TUT-37	AMC416654	AMC416646	\$155.00
TUT-38	AMC416655	AMC416646	\$155.00
TUT-39	AMC416656	AMC416646	\$155.00

NO WARRANTY IS MADE BY BLM FOR USE OF THE DATA FOR PURPOSES NOT INTENDED BY BLM

**DEPARTMENT OF THE INTERIOR  
BUREAU OF LAND MANAGEMENT  
MINING CLAIMS**

Run Date/Time: 9/11/2018

**MC Maintenance Fees Paid Through the BLM Pay Portal  
(by Date Paid)**

Page 29 Of 723

TUT-40	AMC416657	AMC416646	\$155.00
TUT-41	AMC416658	AMC416646	\$155.00
TUT-42	AMC416659	AMC416646	\$155.00
TUT-43	AMC416660	AMC416646	\$155.00
TUT-44	AMC416661	AMC416646	\$155.00
TUT-45	AMC416662	AMC416646	\$155.00
TUT-46	AMC416663	AMC416646	\$155.00
TUT-47	AMC416664	AMC416646	\$155.00
TUT-48	AMC416665	AMC416646	\$155.00
TUT-49	AMC416666	AMC416646	\$155.00
TUT-50	AMC416667	AMC416646	\$155.00
TUT-51	AMC416668	AMC416646	\$155.00
TUT-52	AMC416669	AMC416646	\$155.00
TUT-53	AMC416670	AMC416646	\$155.00
TUT-54	AMC416671	AMC416646	\$155.00
TUT-55	AMC416672	AMC416646	\$155.00
TUT-56	AMC416673	AMC416646	\$155.00
TUT-57	AMC416674	AMC416646	\$155.00
TUT-58	AMC416675	AMC416646	\$155.00
TUT-59	AMC416676	AMC416646	\$155.00
TUT-60	AMC416677	AMC416646	\$155.00
TUT-61	AMC416678	AMC416646	\$155.00
TUT-62	AMC416679	AMC416646	\$155.00
TUT-63	AMC416680	AMC416646	\$155.00
TUT-64	AMC416681	AMC416646	\$155.00
TUT-65	AMC416682	AMC416646	\$155.00
TUT-66	AMC416683	AMC416646	\$155.00
TUT-67	AMC416684	AMC416646	\$155.00
TUT-68	AMC416685	AMC416646	\$155.00
TUT-69	AMC416686	AMC416646	\$155.00
TUT-70	AMC416687	AMC416646	\$155.00

NO WARRANTY IS MADE BY BLM FOR USE OF THE DATA FOR PURPOSES NOT INTENDED BY BLM



## United States Department of the Interior

## Bureau of Land Management

BUSINESS &amp; SUPPORT SVCS DIV

ONE N CENTRAL AVE SUITE 800

PHOENIX, AZ 85004 -4427

Phone: 602-417-9200

Receipt

No:

4240221

Transaction #: 4355631

Date of Transaction: 08/20/2018

## CUSTOMER:

THOMAS J ARKOOSH  
10923 VALLEROSA STREET  
LAS VEGAS,NV 89141 US

LINE #	QTY	DESCRIPTION	REMARKS	UNIT PRICE	TOTAL
1	1.00	LOCATABLE MINERALS / MINING CLAIMS- NOT NEW-UNADJUD,ONE AUTH NO. ONLY / MINING CLAIM MONEY RECEIVED CASES: AMC413510/\$13950.00		- n/a -	13950.00
TOTAL:					\$13,950.00

## PAYMENT INFORMATION

NOTE: Items will appear on credit card statement as "BLM O Mining Claim".

1	AMOUNT:	13950.00	POSTMARKED:	N/A
	TYPE:	CREDIT CARD	RECEIVED:	08/20/2018
	NAME:	THOMAS J ARKOOSH 10923 VALLEROSA STREET LAS VEGAS NV 89141 US		
	CARD NO:	XXXXXXXXXXXX9416	AUTH CODE:	151278
	NAME ON CARD:	THOMAS J ARKOOSH		
	SIGNATURE:			

## REMARKS

This receipt was generated by the automated BLM Collections and Billing System and is a paper representation of a portion of the official electronic record contained therein.

Run Date: 09/05/17

Run Time: 02:33 PM

**DEPARTMENT OF THE INTERIOR  
BUREAU OF LAND MANAGEMENT  
MINING CLAIMS**

**MC Maintenance Fees Paid Through the BLM Pay Portal**

**CBS Receipt: 3966789**

Printed For Lead File # AMC414552

Agency Tracking ID: 1504130186

Assessment Year: 2018

Number of BLM Serial Nr: 90

Paid On: 08/30/2017

Total Amount Paid: \$13,950.00

Claim Name	BLM Serial No	Lead File No	Amount Paid
AJA-1	AMC413510	AMC413510	\$155.00
AJA-3	AMC413512	AMC413510	\$155.00
AJA-5	AMC413514	AMC413510	\$155.00
AJA-7	AMC413516	AMC413510	\$155.00
AJA-9	AMC413518	AMC413510	\$155.00
AJA-13	AMC413769	AMC413769	\$155.00
AJA-14	AMC414246	AMC414246	\$155.00
AJA-15	AMC414247	AMC414246	\$155.00
AJA-16	AMC414248	AMC414246	\$155.00
AJA-17	AMC414249	AMC414246	\$155.00
AJA-18	AMC414552	AMC414552	\$155.00
AJA-19	AMC414553	AMC414552	\$155.00
AJA-20	AMC414554	AMC414552	\$155.00
AJA-21	AMC414555	AMC414552	\$155.00
AJA-22	AMC414556	AMC414552	\$155.00
AJA-24	AMC414558	AMC414552	\$155.00
AJA-25	AMC414559	AMC414552	\$155.00
AJA-26	AMC414560	AMC414552	\$155.00
AJA-27	AMC414561	AMC414552	\$155.00
AJA-28	AMC414562	AMC414552	\$155.00
TUT-1	AMC415013	AMC415013	\$155.00
TUT-2	AMC415014	AMC415013	\$155.00
TUT-3	AMC415015	AMC415013	\$155.00
TUT-4	AMC415016	AMC415013	\$155.00
TUT-5	AMC415017	AMC415013	\$155.00
TUT-6	AMC415018	AMC415013	\$155.00
TUT-7	AMC415019	AMC415013	\$155.00
TUT-8	AMC415020	AMC415013	\$155.00
TUT 9	AMC415597	AMC415597	\$155.00
TUT 10	AMC415598	AMC415597	\$155.00
TUT 11	AMC415599	AMC415597	\$155.00
TUT 12	AMC415600	AMC415597	\$155.00
TUT 13	AMC415601	AMC415597	\$155.00
TUT 14	AMC415602	AMC415597	\$155.00
TUT 15	AMC415603	AMC415597	\$155.00
TUT 16	AMC415604	AMC415597	\$155.00

**NO WARRANTY IS MADE BY BLM FOR USE OF THE DATA FOR PURPOSES NOT INTENDED BY BLM**



Run Date: 09/05/17

Run Time: 02:33 PM

**DEPARTMENT OF THE INTERIOR  
BUREAU OF LAND MANAGEMENT  
MINING CLAIMS**

**MC Maintenance Fees Paid Through the BLM Pay Portal**

**CBS Receipt: 3966789**

Printed For Lead File # AMC414552

Agency Tracking ID: 1504130186

Assessment Year: 2018

Number of BLM Serial Nr: 90

Paid On: 08/30/2017

Total Amount Paid: \$13,950.00

Claim Name	BLM Serial No	Lead File No	Amount Paid
TUT-17	AMC416173	AMC416173	\$155.00
TUT-18	AMC416174	AMC416173	\$155.00
TUT-19	AMC416175	AMC416173	\$155.00
TUT-20	AMC416176	AMC416173	\$155.00
TUT-21	AMC416177	AMC416173	\$155.00
TUT-22	AMC416178	AMC416173	\$155.00
TUT-23	AMC416179	AMC416173	\$155.00
TUT-24	AMC416180	AMC416173	\$155.00
TUT-25	AMC416181	AMC416173	\$155.00
TUT-26	AMC416182	AMC416173	\$155.00
TUT-27	AMC416183	AMC416173	\$155.00
TUT-28	AMC416184	AMC416173	\$155.00
TUT-29	AMC416646	AMC416646	\$155.00
TUT-30	AMC416647	AMC416646	\$155.00
TUT-31	AMC416648	AMC416646	\$155.00
TUT-32	AMC416649	AMC416646	\$155.00
TUT-33	AMC416650	AMC416646	\$155.00
TUT-34	AMC416651	AMC416646	\$155.00
TUT-35	AMC416652	AMC416646	\$155.00
TUT-36	AMC416653	AMC416646	\$155.00
TUT-37	AMC416654	AMC416646	\$155.00
TUT-38	AMC416655	AMC416646	\$155.00
TUT-39	AMC416656	AMC416646	\$155.00
TUT-40	AMC416657	AMC416646	\$155.00
TUT-41	AMC416658	AMC416646	\$155.00
TUT-42	AMC416659	AMC416646	\$155.00
TUT-43	AMC416660	AMC416646	\$155.00
TUT-44	AMC416661	AMC416646	\$155.00
TUT-45	AMC416662	AMC416646	\$155.00
TUT-46	AMC416663	AMC416646	\$155.00
TUT-47	AMC416664	AMC416646	\$155.00
TUT-48	AMC416665	AMC416646	\$155.00
TUT-49	AMC416666	AMC416646	\$155.00
TUT-50	AMC416667	AMC416646	\$155.00
TUT-51	AMC416668	AMC416646	\$155.00
TUT-52	AMC416669	AMC416646	\$155.00

**NO WARRANTY IS MADE BY BLM FOR USE OF THE DATA FOR PURPOSES NOT INTENDED BY BLM**



Run Date: 09/05/17

Run Time: 02:33 PM

**DEPARTMENT OF THE INTERIOR  
BUREAU OF LAND MANAGEMENT  
MINING CLAIMS**

**MC Maintenance Fees Paid Through the BLM Pay Portal**

**CBS Receipt: 3966789**

Printed For Lead File # AMC414552

Agency Tracking ID: 1504130186

Assessment Year: 2018

Number of BLM Serial Nr: 90

Paid On: 08/30/2017

Total Amount Paid: \$13,950.00

Claim Name	BLM Serial No	Lead File No	Amount Paid
TUT-53	AMC416670	AMC416646	\$155.00
TUT-54	AMC416671	AMC416646	\$155.00
TUT-55	AMC416672	AMC416646	\$155.00
TUT-56	AMC416673	AMC416646	\$155.00
TUT-57	AMC416674	AMC416646	\$155.00
TUT-58	AMC416675	AMC416646	\$155.00
TUT-59	AMC416676	AMC416646	\$155.00
TUT-60	AMC416677	AMC416646	\$155.00
TUT-61	AMC416678	AMC416646	\$155.00
TUT-62	AMC416679	AMC416646	\$155.00
TUT-63	AMC416680	AMC416646	\$155.00
TUT-64	AMC416681	AMC416646	\$155.00
TUT-65	AMC416682	AMC416646	\$155.00
TUT-66	AMC416683	AMC416646	\$155.00
TUT-67	AMC416684	AMC416646	\$155.00
TUT-68	AMC416685	AMC416646	\$155.00
TUT-69	AMC416686	AMC416646	\$155.00
TUT-70	AMC416687	AMC416646	\$155.00

**NO WARRANTY IS MADE BY BLM FOR USE OF THE DATA FOR PURPOSES NOT INTENDED BY BLM**

**United States Department of the Interior****Bureau of Land Management**

BUSINESS &amp; SUPPORT SVCS DIV

ONE N CENTRAL AVE SUITE 800

PHOENIX, AZ 85004 -4427

Phone: 602-417-9200

Receipt

No:

3966789

7

<b>Transaction #:</b> 4076673	
<b>Date of Transaction:</b> 08/30/2017	
CUSTOMER:	
	THOMAS J ARKOOSH 10923 VALLEROSA STREET LAS VEGAS,NV 89141 US

LINE #	QTY	DESCRIPTION	REMARKS	UNIT PRICE	TOTAL
1	1.00	LOCATABLE MINERALS / MINING CLAIMS- NOT NEW-UNADJUD,ONE AUTH NO. ONLY / MINING CLAIM MONEY RECEIVED CASES: AMC416660/\$13950.00		- n/a -	13950.00
TOTAL:					\$13,950.00

PAYMENT INFORMATION				
NOTE: Items will appear on credit card statement as "BLM O Mining Claim".				
1	AMOUNT:	13950.00	POSTMARKED:	N/A
	TYPE:	CREDIT CARD	RECEIVED:	08/30/2017
	NAME:	THOMAS J ARKOOSH 10923 VALLEROSA STREET LAS VEGAS NV 89141 US		
	CARD NO:	XXXXXXXXXXXX9416	AUTH CODE:	145182
	NAME ON CARD:	THOMAS J ARKOOSH		
	EXPIRES:	09/2019		
	SIGNATURE:			

REMARKS

This receipt was generated by the automated BLM Collections and Billing System and is a paper representation of a portion of the official electronic record contained therein.



Run Date: 09/14/16

Run Time: 01:48 PM

**DEPARTMENT OF THE INTERIOR  
BUREAU OF LAND MANAGEMENT  
MINING CLAIMS**

**MC Maintenance Fees Paid Through the BLM Pay Portal**

**CBS Receipt: 3647439**

Printed For Lead File # **AMC414552**

Agency Tracking ID: 1472588596

Assessment Year: 2017

Number of BLM Serial Nr: 90

Paid On: 08/30/2016

Total Amount Paid: \$13,950.00

Claim Name	BLM Serial No	Lead File No	Amount Paid
AJA-1	AMC413510	AMC413510	\$155.00
AJA-3	AMC413512	AMC413510	\$155.00
AJA-5	AMC413514	AMC413510	\$155.00
AJA-7	AMC413516	AMC413510	\$155.00
AJA-9	AMC413518	AMC413510	\$155.00
AJA-13	AMC413769	AMC413769	\$155.00
AJA-14	AMC414246	AMC414246	\$155.00
AJA-15	AMC414247	AMC414246	\$155.00
AJA-16	AMC414248	AMC414246	\$155.00
AJA-17	AMC414249	AMC414246	\$155.00
AJA-18	AMC414552	AMC414552	\$155.00
AJA-19	AMC414553	AMC414552	\$155.00
AJA-20	AMC414554	AMC414552	\$155.00
AJA-21	AMC414555	AMC414552	\$155.00
AJA-22	AMC414556	AMC414552	\$155.00
AJA-24	AMC414558	AMC414552	\$155.00
AJA-25	AMC414559	AMC414552	\$155.00
AJA-26	AMC414560	AMC414552	\$155.00
AJA-27	AMC414561	AMC414552	\$155.00
AJA-28	AMC414562	AMC414552	\$155.00
TUT-1	AMC415013	AMC415013	\$155.00
TUT-2	AMC415014	AMC415013	\$155.00
TUT-3	AMC415015	AMC415013	\$155.00
TUT-4	AMC415016	AMC415013	\$155.00
TUT-5	AMC415017	AMC415013	\$155.00
TUT-6	AMC415018	AMC415013	\$155.00
TUT-7	AMC415019	AMC415013	\$155.00
TUT-8	AMC415020	AMC415013	\$155.00
TUT 9	AMC415597	AMC415597	\$155.00
TUT 10	AMC415598	AMC415597	\$155.00
TUT 11	AMC415599	AMC415597	\$155.00
TUT 12	AMC415600	AMC415597	\$155.00
TUT 13	AMC415601	AMC415597	\$155.00
TUT 14	AMC415602	AMC415597	\$155.00
TUT 15	AMC415603	AMC415597	\$155.00
TUT 16	AMC415604	AMC415597	\$155.00

**NO WARRANTY IS MADE BY BLM FOR USE OF THE DATA FOR PURPOSES NOT INTENDED BY BLM**



Run Date: 09/14/16

Run Time: 01:48 PM

**DEPARTMENT OF THE INTERIOR  
BUREAU OF LAND MANAGEMENT  
MINING CLAIMS**

**MC Maintenance Fees Paid Through the BLM Pay Portal**

**CBS Receipt: 3647439**

Printed For Lead File # AMC414552

Agency Tracking ID: 1472588596

Assessment Year: 2017

Number of BLM Serial Nr: 90

Paid On: 08/30/2016

Total Amount Paid: \$13,950.00

Claim Name	BLM Serial No	Lead File No	Amount Paid
TUT-17	AMC416173	AMC416173	\$155.00
TUT-18	AMC416174	AMC416173	\$155.00
TUT-19	AMC416175	AMC416173	\$155.00
TUT-20	AMC416176	AMC416173	\$155.00
TUT-21	AMC416177	AMC416173	\$155.00
TUT-22	AMC416178	AMC416173	\$155.00
TUT-23	AMC416179	AMC416173	\$155.00
TUT-24	AMC416180	AMC416173	\$155.00
TUT-25	AMC416181	AMC416173	\$155.00
TUT-26	AMC416182	AMC416173	\$155.00
TUT-27	AMC416183	AMC416173	\$155.00
TUT-28	AMC416184	AMC416173	\$155.00
TUT-29	AMC416646	AMC416646	\$155.00
TUT-30	AMC416647	AMC416646	\$155.00
TUT-31	AMC416648	AMC416646	\$155.00
TUT-32	AMC416649	AMC416646	\$155.00
TUT-33	AMC416650	AMC416646	\$155.00
TUT-34	AMC416651	AMC416646	\$155.00
TUT-35	AMC416652	AMC416646	\$155.00
TUT-36	AMC416653	AMC416646	\$155.00
TUT-37	AMC416654	AMC416646	\$155.00
TUT-38	AMC416655	AMC416646	\$155.00
TUT-39	AMC416656	AMC416646	\$155.00
TUT-40	AMC416657	AMC416646	\$155.00
TUT-41	AMC416658	AMC416646	\$155.00
TUT-42	AMC416659	AMC416646	\$155.00
TUT-43	AMC416660	AMC416646	\$155.00
TUT-44	AMC416661	AMC416646	\$155.00
TUT-45	AMC416662	AMC416646	\$155.00
TUT-46	AMC416663	AMC416646	\$155.00
TUT-47	AMC416664	AMC416646	\$155.00
TUT-48	AMC416665	AMC416646	\$155.00
TUT-49	AMC416666	AMC416646	\$155.00
TUT-50	AMC416667	AMC416646	\$155.00
TUT-51	AMC416668	AMC416646	\$155.00
TUT-52	AMC416669	AMC416646	\$155.00

**NO WARRANTY IS MADE BY BLM FOR USE OF THE DATA FOR PURPOSES NOT INTENDED BY BLM**

Run Date: 09/14/16

Run Time: 01:48 PM

**DEPARTMENT OF THE INTERIOR  
BUREAU OF LAND MANAGEMENT  
MINING CLAIMS**

**MC Maintenance Fees Paid Through the BLM Pay Portal**

**CBS Receipt: 3647439**

Printed For Lead File # AMC414552

Agency Tracking ID: 1472588596

Assessment Year: 2017

Number of BLM Serial Nr: 90

Paid On: 08/30/2016

Total Amount Paid: \$13,950.00

Claim Name	BLM Serial No	Lead File No	Amount Paid
TUT-53	AMC416670	AMC416646	\$155.00
TUT-54	AMC416671	AMC416646	\$155.00
TUT-55	AMC416672	AMC416646	\$155.00
TUT-56	AMC416673	AMC416646	\$155.00
TUT-57	AMC416674	AMC416646	\$155.00
TUT-58	AMC416675	AMC416646	\$155.00
TUT-59	AMC416676	AMC416646	\$155.00
TUT-60	AMC416677	AMC416646	\$155.00
TUT-61	AMC416678	AMC416646	\$155.00
TUT-62	AMC416679	AMC416646	\$155.00
TUT-63	AMC416680	AMC416646	\$155.00
TUT-64	AMC416681	AMC416646	\$155.00
TUT-65	AMC416682	AMC416646	\$155.00
TUT-66	AMC416683	AMC416646	\$155.00
TUT-67	AMC416684	AMC416646	\$155.00
TUT-68	AMC416685	AMC416646	\$155.00
TUT-69	AMC416686	AMC416646	\$155.00
TUT-70	AMC416687	AMC416646	\$155.00

**NO WARRANTY IS MADE BY BLM FOR USE OF THE DATA FOR PURPOSES NOT INTENDED BY BLM**



**United States Department of the Interior**  
**Bureau of Land Management**  
BUSINESS & SUPPORT SVCS DIV  
ONE N CENTRAL AVE SUITE 800  
PHOENIX, AZ 85004 -4427  
Phone: (602) 417-9200

Receipt

No: 3647439

<b>Transaction #:</b> 3751426	
<b>Date of Transaction:</b> 08/30/2016	
<b>CUSTOMER:</b>	
	THOMAS J ARKOOSH 10923 VALLEROSA STREET LAS VEGAS,NV 89141 US

LINE #	QTY	DESCRIPTION	REMARKS	UNIT PRICE	TOTAL
1	1.00	LOCATABLE MINERALS / MINING CLAIMS- NOT NEW-UNADJUD,ONE AUTH NO. ONLY / MINING CLAIM MONEY RECEIVED CASES: AMC416660/\$13950.00		- n/a -	13950.00
<b>TOTAL:</b>					<b>\$13,950.00</b>

PAYMENT INFORMATION				
NOTE: Items will appear on credit card statement as "BLM O Mining Claim".				
1	AMOUNT:	13950.00	POSTMARKED:	N/A
	TYPE:	CREDIT CARD	RECEIVED:	08/30/2016
	NAME:	THOMAS J ARKOOSH 10923 VALLEROSA STREET LAS VEGAS NV 89141 US		
	CARD NO:	XXXXXXXXXXXX9416	AUTH CODE:	122060
	NAME ON CARD:	THOMAS J ARKOOSH		
	EXPIRES:	09/2019		
	SIGNATURE:			

<b>REMARKS</b>

This receipt was generated by the automated BLM Collections and Billing System and is a paper representation of a portion of the official electronic record contained therein.



Run Date: 08/17/15

Run Time: 02:46 PM

**DEPARTMENT OF THE INTERIOR  
BUREAU OF LAND MANAGEMENT  
MINING CLAIMS**

**MC Maintenance Fees Paid Through the BLM Pay Portal**

**CBS Receipt: 3363626**

Printed For Lead File # **AMC414552**

Agency Tracking ID: 1439226867

Assessment Year: 2016

Number of BLM Serial Nr: 33

Paid On: 08/10/2015

Total Amount Paid: \$5,115.00

Claim Name	BLM Serial No	Lead File No	Amount Paid
AJA-1	AMC413510	AMC413510	\$155.00
AJA-2	AMC413511	AMC413510	\$155.00
AJA-3	AMC413512	AMC413510	\$155.00
AJA-4	AMC413513	AMC413510	\$155.00
AJA-5	AMC413514	AMC413510	\$155.00
AJA-6	AMC413515	AMC413510	\$155.00
AJA-7	AMC413516	AMC413510	\$155.00
AJA-8	AMC413517	AMC413510	\$155.00
AJA-9	AMC413518	AMC413510	\$155.00
AJA-10	AMC413519	AMC413510	\$155.00
AJA-11	AMC413520	AMC413510	\$155.00
AJA-12	AMC413521	AMC413510	\$155.00
AJA-13	AMC413769	AMC413769	\$155.00
AJA-14	AMC414246	AMC414246	\$155.00
AJA-15	AMC414247	AMC414246	\$155.00
AJA-16	AMC414248	AMC414246	\$155.00
AJA-17	AMC414249	AMC414246	\$155.00
AJA-18	AMC414552	AMC414552	\$155.00
AJA-19	AMC414553	AMC414552	\$155.00
AJA-20	AMC414554	AMC414552	\$155.00
AJA-21	AMC414555	AMC414552	\$155.00
AJA-22	AMC414556	AMC414552	\$155.00
AJA-23	AMC414557	AMC414552	\$155.00
AJA-24	AMC414558	AMC414552	\$155.00
AJA-25	AMC414559	AMC414552	\$155.00
AJA-26	AMC414560	AMC414552	\$155.00
AJA-27	AMC414561	AMC414552	\$155.00
AJA-28	AMC414562	AMC414552	\$155.00
AJA-29	AMC414563	AMC414552	\$155.00
AJA-30	AMC414564	AMC414552	\$155.00
AJA-31	AMC414565	AMC414552	\$155.00
AJA-32	AMC414566	AMC414552	\$155.00
AJA-33	AMC414567	AMC414552	\$155.00

**NO WARRANTY IS MADE BY BLM FOR USE OF THE DATA FOR PURPOSES NOT INTENDED BY BLM**

**United States Department of the Interior**  
**Bureau of Land Management**  
 BUSINESS & SUPPORT SVCS DIV  
 ONE N CENTRAL AVE SUITE 800  
 PHOENIX, AZ 85004 -4427  
 Phone: (602) 417-9200

Receipt

No: 3363626

<b>Transaction #:</b> 3461661	
<b>Date of Transaction:</b> 08/10/2015	
<b>CUSTOMER:</b>	
	THOMAS J ARKOOSH 10923 VALLEROSA STREET LAS VEGAS,NV 89141 US

LINE #	QTY	DESCRIPTION	REMARKS	UNIT PRICE	TOTAL
1	1.00	LOCATABLE MINERALS / MINING CLAIMS- NOT NEW-UNADJUD,ONE AUTH NO. ONLY / MINING CLAIM MONEY RECEIVED <b>CASES:</b> AMC414552/\$5115.00		- n/a -	5115.00
<b>TOTAL:</b>					<b>\$5,115.00</b>

PAYMENT INFORMATION				
NOTE: Items will appear on credit card statement as "BLM O Mining Claim".				
1	AMOUNT:	5115.00	POSTMARKED:	N/A
	TYPE:	CREDIT CARD	RECEIVED:	08/10/2015
	NAME:	THOMAS J ARKOOSH 10923 VALLEROSA STREET LAS VEGAS NV 89141 US		
	CARD NO:	XXXXXXXXXXXX2466	AUTH CODE:	101483
	NAME ON CARD:	THOMAS J ARKOOSH		
	EXPIRES:	12/2015		
	SIGNATURE:			

REMARKS

This receipt was generated by the automated BLM Collections and Billing System and is a paper representation of a portion of the official electronic record contained therein.



**United States Department of the Interior**  
**Bureau of Land Management**  
BUSINESS & SUPPORT SVCS DIV  
ONE N CENTRAL AVE SUITE 800  
PHOENIX, AZ 85004 -4427  
Phone: (602) 417-9200

Receipt

No: 3363626

<b>Transaction #:</b> 3461661	
<b>Date of Transaction:</b> 08/10/2015	
<b>CUSTOMER:</b>	
	THOMAS J ARKOOSH 10923 VALLEROSA STREET LAS VEGAS,NV 89141 US

LINE #	QTY	DESCRIPTION	REMARKS	UNIT PRICE	TOTAL
1	1.00	LOCATABLE MINERALS / MINING CLAIMS- NOT NEW-UNADJUD,ONE AUTH NO. ONLY / MINING CLAIM MONEY RECEIVED CASES: <b>AMC414552</b> /\$5115.00		- n/a -	5115.00
<b>TOTAL:</b>					<b>\$5,115.00</b>

PAYMENT INFORMATION				
NOTE: Items will appear on credit card statement as "BLM O Mining Claim".				
1	AMOUNT:	5115.00	POSTMARKED:	N/A
	TYPE:	CREDIT CARD	RECEIVED:	08/10/2015
	NAME:	THOMAS J ARKOOSH 10923 VALLEROSA STREET LAS VEGAS NV 89141 US		
	CARD NO:	XXXXXXXXXXXX2466	AUTH CODE:	101483
	NAME ON CARD:	THOMAS J ARKOOSH		
	EXPIRES:	12/2015		
	SIGNATURE:			

<b>REMARKS</b>

This receipt was generated by the automated BLM Collections and Billing System and is a paper representation of a portion of the official electronic record contained therein.



Run Date: 08/12/15

Run Time: 08:37 AM

**DEPARTMENT OF THE INTERIOR  
BUREAU OF LAND MANAGEMENT  
MINING CLAIMS**

**MC Maintenance Fees Paid Through the BLM Pay Portal**

**CBS Receipt: 3363626**

Printed For Lead File # AMC413510

Agency Tracking ID: 1439226867

Assessment Year: 2016

Number of BLM Serial Nr: 33

Paid On: 08/10/2015

Total Amount Paid: \$5,115.00

Claim Name	BLM Serial No	Lead File No	Amount Paid
AJA-1	AMC413510	AMC413510	\$155.00
AJA-2	AMC413511	AMC413510	\$155.00
AJA-3	AMC413512	AMC413510	\$155.00
AJA-4	AMC413513	AMC413510	\$155.00
AJA-5	AMC413514	AMC413510	\$155.00
AJA-6	AMC413515	AMC413510	\$155.00
AJA-7	AMC413516	AMC413510	\$155.00
AJA-8	AMC413517	AMC413510	\$155.00
AJA-9	AMC413518	AMC413510	\$155.00
AJA-10	AMC413519	AMC413510	\$155.00
AJA-11	AMC413520	AMC413510	\$155.00
AJA-12	AMC413521	AMC413510	\$155.00
AJA-13	AMC413769	AMC413769	\$155.00
AJA-14	AMC414246	AMC414246	\$155.00
AJA-15	AMC414247	AMC414246	\$155.00
AJA-16	AMC414248	AMC414246	\$155.00
AJA-17	AMC414249	AMC414246	\$155.00
AJA-18	AMC414552	AMC414552	\$155.00
AJA-19	AMC414553	AMC414552	\$155.00
AJA-20	AMC414554	AMC414552	\$155.00
AJA-21	AMC414555	AMC414552	\$155.00
AJA-22	AMC414556	AMC414552	\$155.00
AJA-23	AMC414557	AMC414552	\$155.00
AJA-24	AMC414558	AMC414552	\$155.00
AJA-25	AMC414559	AMC414552	\$155.00
AJA-26	AMC414560	AMC414552	\$155.00
AJA-27	AMC414561	AMC414552	\$155.00
AJA-28	AMC414562	AMC414552	\$155.00
AJA-29	AMC414563	AMC414552	\$155.00
AJA-30	AMC414564	AMC414552	\$155.00
AJA-31	AMC414565	AMC414552	\$155.00
AJA-32	AMC414566	AMC414552	\$155.00
AJA-33	AMC414567	AMC414552	\$155.00

**NO WARRANTY IS MADE BY BLM FOR USE OF THE DATA FOR PURPOSES NOT INTENDED BY BLM**

Run Date: 08/12/15

Run Time: 08:37 AM

**DEPARTMENT OF THE INTERIOR  
BUREAU OF LAND MANAGEMENT  
MINING CLAIMS**

**MC Maintenance Fees Paid Through the BLM Pay Portal**

**CBS Receipt: 3363626**

Printed For Lead File # AMC413769

Agency Tracking ID: 1439226867

Assessment Year: 2016

Number of BLM Serial Nr: 33

Paid On: 08/10/2015

Total Amount Paid: \$5,115.00

Claim Name	BLM Serial No	Lead File No	Amount Paid
AJA-1	AMC413510	AMC413510	\$155.00
AJA-2	AMC413511	AMC413510	\$155.00
AJA-3	AMC413512	AMC413510	\$155.00
AJA-4	AMC413513	AMC413510	\$155.00
AJA-5	AMC413514	AMC413510	\$155.00
AJA-6	AMC413515	AMC413510	\$155.00
AJA-7	AMC413516	AMC413510	\$155.00
AJA-8	AMC413517	AMC413510	\$155.00
AJA-9	AMC413518	AMC413510	\$155.00
AJA-10	AMC413519	AMC413510	\$155.00
AJA-11	AMC413520	AMC413510	\$155.00
AJA-12	AMC413521	AMC413510	\$155.00
AJA-13	AMC413769	AMC413769	\$155.00
AJA-14	AMC414246	AMC414246	\$155.00
AJA-15	AMC414247	AMC414246	\$155.00
AJA-16	AMC414248	AMC414246	\$155.00
AJA-17	AMC414249	AMC414246	\$155.00
AJA-18	AMC414552	AMC414552	\$155.00
AJA-19	AMC414553	AMC414552	\$155.00
AJA-20	AMC414554	AMC414552	\$155.00
AJA-21	AMC414555	AMC414552	\$155.00
AJA-22	AMC414556	AMC414552	\$155.00
AJA-23	AMC414557	AMC414552	\$155.00
AJA-24	AMC414558	AMC414552	\$155.00
AJA-25	AMC414559	AMC414552	\$155.00
AJA-26	AMC414560	AMC414552	\$155.00
AJA-27	AMC414561	AMC414552	\$155.00
AJA-28	AMC414562	AMC414552	\$155.00
AJA-29	AMC414563	AMC414552	\$155.00
AJA-30	AMC414564	AMC414552	\$155.00
AJA-31	AMC414565	AMC414552	\$155.00
AJA-32	AMC414566	AMC414552	\$155.00
AJA-33	AMC414567	AMC414552	\$155.00

**NO WARRANTY IS MADE BY BLM FOR USE OF THE DATA FOR PURPOSES NOT INTENDED BY BLM**

**United States Department of the Interior**  
**Bureau of Land Management**  
BUSINESS & SUPPORT SVCS DIV  
ONE N CENTRAL AVE SUITE 800  
PHOENIX, AZ 85004 -4427  
Phone: (602) 417-9200

Receipt

No: 3363626

**Transaction #:** 3461661**Date of Transaction:** 08/10/2015**CUSTOMER:**

THOMAS J ARKOOSH  
10923 VALLEROSA STREET  
LAS VEGAS,NV 89141 US

LINE #	QTY	DESCRIPTION	REMARKS	UNIT PRICE	TOTAL
1	1.00	LOCATABLE MINERALS / MINING CLAIMS- NOT NEW-UNADJUD,ONE AUTH NO. ONLY / MINING CLAIM MONEY RECEIVED CASES: <b>AMC414552/\$5115.00</b>		- n/a -	5115.00
<b>TOTAL:</b>					<b>\$5,115.00</b>

**PAYMENT INFORMATION**

NOTE: Items will appear on credit card statement as "BLM O Mining Claim".

1	AMOUNT:	5115.00	POSTMARKED:	N/A
	TYPE:	CREDIT CARD	RECEIVED:	08/10/2015
	NAME:	THOMAS J ARKOOSH 10923 VALLEROSA STREET LAS VEGAS NV 89141 US		
	CARD NO:	XXXXXXXXXXXX2466	AUTH CODE:	101483
	NAME ON CARD:	THOMAS J ARKOOSH		
	EXPIRES:	12/2015		
	SIGNATURE:			

**REMARKS**

This receipt was generated by the automated BLM Collections and Billing System and is a paper representation of a portion of the official electronic record contained therein.



Run Date: 08/12/15

Run Time: 08:37 AM

**DEPARTMENT OF THE INTERIOR  
BUREAU OF LAND MANAGEMENT  
MINING CLAIMS**

**MC Maintenance Fees Paid Through the BLM Pay Portal**

**CBS Receipt: 3363627**

Printed For Lead File # AMC415597

Agency Tracking ID: 1439228150

Assessment Year: 2016

Number of BLM Serial Nr: 70

Paid On: 08/10/2015

Total Amount Paid: \$10,850.00

Claim Name	BLM Serial No	Lead File No	Amount Paid
TUT-1	AMC415013	AMC415013	\$155.00
TUT-2	AMC415014	AMC415013	\$155.00
TUT-3	AMC415015	AMC415013	\$155.00
TUT-4	AMC415016	AMC415013	\$155.00
TUT-5	AMC415017	AMC415013	\$155.00
TUT-6	AMC415018	AMC415013	\$155.00
TUT-7	AMC415019	AMC415013	\$155.00
TUT-8	AMC415020	AMC415013	\$155.00
TUT 9	AMC415597	AMC415597	\$155.00
TUT 10	AMC415598	AMC415597	\$155.00
TUT 11	AMC415599	AMC415597	\$155.00
TUT 12	AMC415600	AMC415597	\$155.00
TUT 13	AMC415601	AMC415597	\$155.00
TUT 14	AMC415602	AMC415597	\$155.00
TUT 15	AMC415603	AMC415597	\$155.00
TUT 16	AMC415604	AMC415597	\$155.00
TUT-17	AMC416173	AMC416173	\$155.00
TUT-18	AMC416174	AMC416173	\$155.00
TUT-19	AMC416175	AMC416173	\$155.00
TUT-20	AMC416176	AMC416173	\$155.00
TUT-21	AMC416177	AMC416173	\$155.00
TUT-22	AMC416178	AMC416173	\$155.00
TUT-23	AMC416179	AMC416173	\$155.00
TUT-24	AMC416180	AMC416173	\$155.00
TUT-25	AMC416181	AMC416173	\$155.00
TUT-26	AMC416182	AMC416173	\$155.00
TUT-27	AMC416183	AMC416173	\$155.00
TUT-28	AMC416184	AMC416173	\$155.00
TUT-29	AMC416646	AMC416646	\$155.00
TUT-30	AMC416647	AMC416646	\$155.00
TUT-31	AMC416648	AMC416646	\$155.00
TUT-32	AMC416649	AMC416646	\$155.00
TUT-33	AMC416650	AMC416646	\$155.00
TUT-34	AMC416651	AMC416646	\$155.00
TUT-35	AMC416652	AMC416646	\$155.00
TUT-36	AMC416653	AMC416646	\$155.00

**NO WARRANTY IS MADE BY BLM FOR USE OF THE DATA FOR PURPOSES NOT INTENDED BY BLM**

Run Date: 08/12/15

Run Time: 08:37 AM

**DEPARTMENT OF THE INTERIOR  
BUREAU OF LAND MANAGEMENT  
MINING CLAIMS**

**MC Maintenance Fees Paid Through the BLM Pay Portal**

<b>Claim Name</b>	<b>BLM Serial No</b>	<b>Lead File No</b>	<b>Amount Paid</b>
TUT-37	AMC416654	AMC416646	\$155.00
TUT-38	AMC416655	AMC416646	\$155.00
TUT-39	AMC416656	AMC416646	\$155.00
TUT-40	AMC416657	AMC416646	\$155.00
TUT-41	AMC416658	AMC416646	\$155.00
TUT-42	AMC416659	AMC416646	\$155.00
TUT-43	AMC416660	AMC416646	\$155.00
TUT-44	AMC416661	AMC416646	\$155.00
TUT-45	AMC416662	AMC416646	\$155.00
TUT-46	AMC416663	AMC416646	\$155.00
TUT-47	AMC416664	AMC416646	\$155.00
TUT-48	AMC416665	AMC416646	\$155.00
TUT-49	AMC416666	AMC416646	\$155.00
TUT-50	AMC416667	AMC416646	\$155.00
TUT-51	AMC416668	AMC416646	\$155.00
TUT-52	AMC416669	AMC416646	\$155.00
TUT-53	AMC416670	AMC416646	\$155.00
TUT-54	AMC416671	AMC416646	\$155.00
TUT-55	AMC416672	AMC416646	\$155.00
TUT-56	AMC416673	AMC416646	\$155.00
TUT-57	AMC416674	AMC416646	\$155.00
TUT-58	AMC416675	AMC416646	\$155.00
TUT-59	AMC416676	AMC416646	\$155.00
TUT-60	AMC416677	AMC416646	\$155.00
TUT-61	AMC416678	AMC416646	\$155.00
TUT-62	AMC416679	AMC416646	\$155.00
TUT-63	AMC416680	AMC416646	\$155.00
TUT-64	AMC416681	AMC416646	\$155.00
TUT-65	AMC416682	AMC416646	\$155.00
TUT-66	AMC416683	AMC416646	\$155.00
TUT-67	AMC416684	AMC416646	\$155.00
TUT-68	AMC416685	AMC416646	\$155.00
TUT-69	AMC416686	AMC416646	\$155.00
TUT-70	AMC416687	AMC416646	\$155.00

**NO WARRANTY IS MADE BY BLM FOR USE OF THE DATA FOR PURPOSES NOT INTENDED BY BLM**

**United States Department of the Interior**  
**Bureau of Land Management**  
BUSINESS & SUPPORT SVCS DIV  
ONE N CENTRAL AVE SUITE 800  
PHOENIX, AZ 85004 -4427  
Phone: (602) 417-9200

Receipt

No: 3363626

<b>Transaction #:</b> 3461661	
<b>Date of Transaction:</b> 08/10/2015	
CUSTOMER:	
	THOMAS J ARKOOSH 10923 VALLEROSA STREET LAS VEGAS,NV 89141 US

LINE #	QTY	DESCRIPTION	REMARKS	UNIT PRICE	TOTAL
1	1.00	LOCATABLE MINERALS / MINING CLAIMS- NOT NEW-UNADJUD,ONE AUTH NO. ONLY / MINING CLAIM MONEY RECEIVED CASES: AMC414552/\$5115.00		- n/a -	5115.00
TOTAL:					\$5,115.00

PAYMENT INFORMATION				
NOTE: Items will appear on credit card statement as "BLM O Mining Claim".				
1	AMOUNT:	5115.00	POSTMARKED:	N/A
	TYPE:	CREDIT CARD	RECEIVED:	08/10/2015
	NAME:	THOMAS J ARKOOSH 10923 VALLEROSA STREET LAS VEGAS NV 89141 US		
	CARD NO:	XXXXXXXXXXXX2466	AUTH CODE:	101483
	NAME ON CARD:	THOMAS J ARKOOSH		
	EXPIRES:	12/2015		
	SIGNATURE:			

REMARKS

This receipt was generated by the automated BLM Collections and Billing System and is a paper representation of a portion of the official electronic record contained therein.



Run Date: 08/12/15

Run Time: 08:37 AM

**DEPARTMENT OF THE INTERIOR  
BUREAU OF LAND MANAGEMENT  
MINING CLAIMS**

**MC Maintenance Fees Paid Through the BLM Pay Portal**

**CBS Receipt: 3363626**

Printed For Lead File # AMC414246

Agency Tracking ID: 1439226867

Assessment Year: 2016

Number of BLM Serial Nr: 33

Paid On: 08/10/2015

Total Amount Paid: \$5,115.00

Claim Name	BLM Serial No	Lead File No	Amount Paid
AJA-1	AMC413510	AMC413510	\$155.00
AJA-2	AMC413511	AMC413510	\$155.00
AJA-3	AMC413512	AMC413510	\$155.00
AJA-4	AMC413513	AMC413510	\$155.00
AJA-5	AMC413514	AMC413510	\$155.00
AJA-6	AMC413515	AMC413510	\$155.00
AJA-7	AMC413516	AMC413510	\$155.00
AJA-8	AMC413517	AMC413510	\$155.00
AJA-9	AMC413518	AMC413510	\$155.00
AJA-10	AMC413519	AMC413510	\$155.00
AJA-11	AMC413520	AMC413510	\$155.00
AJA-12	AMC413521	AMC413510	\$155.00
AJA-13	AMC413769	AMC413769	\$155.00
AJA-14	AMC414246	AMC414246	\$155.00
AJA-15	AMC414247	AMC414246	\$155.00
AJA-16	AMC414248	AMC414246	\$155.00
AJA-17	AMC414249	AMC414246	\$155.00
AJA-18	AMC414552	AMC414552	\$155.00
AJA-19	AMC414553	AMC414552	\$155.00
AJA-20	AMC414554	AMC414552	\$155.00
AJA-21	AMC414555	AMC414552	\$155.00
AJA-22	AMC414556	AMC414552	\$155.00
AJA-23	AMC414557	AMC414552	\$155.00
AJA-24	AMC414558	AMC414552	\$155.00
AJA-25	AMC414559	AMC414552	\$155.00
AJA-26	AMC414560	AMC414552	\$155.00
AJA-27	AMC414561	AMC414552	\$155.00
AJA-28	AMC414562	AMC414552	\$155.00
AJA-29	AMC414563	AMC414552	\$155.00
AJA-30	AMC414564	AMC414552	\$155.00
AJA-31	AMC414565	AMC414552	\$155.00
AJA-32	AMC414566	AMC414552	\$155.00
AJA-33	AMC414567	AMC414552	\$155.00

**NO WARRANTY IS MADE BY BLM FOR USE OF THE DATA FOR PURPOSES NOT INTENDED BY BLM**

Run Date: 08/12/15

Run Time: 08:37 AM

**DEPARTMENT OF THE INTERIOR  
BUREAU OF LAND MANAGEMENT  
MINING CLAIMS**

**MC Maintenance Fees Paid Through the BLM Pay Portal**

**CBS Receipt: 3363626**

Printed For Lead File # AMC414552

Agency Tracking ID: 1439226867

Assessment Year: 2016

Number of BLM Serial Nr: 33

Paid On: 08/10/2015

Total Amount Paid: \$5,115.00

Claim Name	BLM Serial No	Lead File No	Amount Paid
AJA-1	AMC413510	AMC413510	\$155.00
AJA-2	AMC413511	AMC413510	\$155.00
AJA-3	AMC413512	AMC413510	\$155.00
AJA-4	AMC413513	AMC413510	\$155.00
AJA-5	AMC413514	AMC413510	\$155.00
AJA-6	AMC413515	AMC413510	\$155.00
AJA-7	AMC413516	AMC413510	\$155.00
AJA-8	AMC413517	AMC413510	\$155.00
AJA-9	AMC413518	AMC413510	\$155.00
AJA-10	AMC413519	AMC413510	\$155.00
AJA-11	AMC413520	AMC413510	\$155.00
AJA-12	AMC413521	AMC413510	\$155.00
AJA-13	AMC413769	AMC413769	\$155.00
AJA-14	AMC414246	AMC414246	\$155.00
AJA-15	AMC414247	AMC414246	\$155.00
AJA-16	AMC414248	AMC414246	\$155.00
AJA-17	AMC414249	AMC414246	\$155.00
AJA-18	AMC414552	AMC414552	\$155.00
AJA-19	AMC414553	AMC414552	\$155.00
AJA-20	AMC414554	AMC414552	\$155.00
AJA-21	AMC414555	AMC414552	\$155.00
AJA-22	AMC414556	AMC414552	\$155.00
AJA-23	AMC414557	AMC414552	\$155.00
AJA-24	AMC414558	AMC414552	\$155.00
AJA-25	AMC414559	AMC414552	\$155.00
AJA-26	AMC414560	AMC414552	\$155.00
AJA-27	AMC414561	AMC414552	\$155.00
AJA-28	AMC414562	AMC414552	\$155.00
AJA-29	AMC414563	AMC414552	\$155.00
AJA-30	AMC414564	AMC414552	\$155.00
AJA-31	AMC414565	AMC414552	\$155.00
AJA-32	AMC414566	AMC414552	\$155.00
AJA-33	AMC414567	AMC414552	\$155.00

**NO WARRANTY IS MADE BY BLM FOR USE OF THE DATA FOR PURPOSES NOT INTENDED BY BLM**

**United States Department of the Interior**  
**Bureau of Land Management**  
 BUSINESS & SUPPORT SVCS DIV  
 ONE N CENTRAL AVE SUITE 800  
 PHOENIX, AZ 85004 -4427  
 Phone: (602) 417-9200

Receipt

No: 3363626

<b>Transaction #:</b> 3461661	
<b>Date of Transaction:</b> 08/10/2015	
<b>CUSTOMER:</b>	
	THOMAS J ARKOOSH 10923 VALLEROSA STREET LAS VEGAS,NV 89141 US

LINE #	QTY	DESCRIPTION	REMARKS	UNIT PRICE	TOTAL
1	1.00	LOCATABLE MINERALS / MINING CLAIMS- NOT NEW-UNADJUD,ONE AUTH NO. ONLY / MINING CLAIM MONEY RECEIVED CASES: AMC414552/\$5115.00		- n/a -	5115.00
<b>TOTAL:</b>					<b>\$5,115.00</b>

PAYMENT INFORMATION			
NOTE: Items will appear on credit card statement as "BLM O Mining Claim".			
1	AMOUNT:	5115.00	POSTMARKED: N/A
	TYPE:	CREDIT CARD	RECEIVED: 08/10/2015
	NAME:	THOMAS J ARKOOSH 10923 VALLEROSA STREET LAS VEGAS NV 89141 US	
	CARD NO:	XXXXXXXXXXXX2466	AUTH CODE: 101483
	NAME ON CARD:	THOMAS J ARKOOSH	
	EXPIRES:	12/2015	
	SIGNATURE:		

REMARKS

This receipt was generated by the automated BLM Collections and Billing System and is a paper representation of a portion of the official electronic record contained therein.



Run Date: 08/12/15

Run Time: 08:37 AM

**DEPARTMENT OF THE INTERIOR  
BUREAU OF LAND MANAGEMENT  
MINING CLAIMS**

**MC Maintenance Fees Paid Through the BLM Pay Portal**

**CBS Receipt: 3363627**

Printed For Lead File # AMC416646

Agency Tracking ID: 1439228150

Assessment Year: 2016

Number of BLM Serial Nr: 70

Paid On: 08/10/2015

Total Amount Paid: \$10,850.00

Claim Name	BLM Serial No	Lead File No	Amount Paid
TUT-1	AMC415013	AMC415013	\$155.00
TUT-2	AMC415014	AMC415013	\$155.00
TUT-3	AMC415015	AMC415013	\$155.00
TUT-4	AMC415016	AMC415013	\$155.00
TUT-5	AMC415017	AMC415013	\$155.00
TUT-6	AMC415018	AMC415013	\$155.00
TUT-7	AMC415019	AMC415013	\$155.00
TUT-8	AMC415020	AMC415013	\$155.00
TUT 9	AMC415597	AMC415597	\$155.00
TUT 10	AMC415598	AMC415597	\$155.00
TUT 11	AMC415599	AMC415597	\$155.00
TUT 12	AMC415600	AMC415597	\$155.00
TUT 13	AMC415601	AMC415597	\$155.00
TUT 14	AMC415602	AMC415597	\$155.00
TUT 15	AMC415603	AMC415597	\$155.00
TUT 16	AMC415604	AMC415597	\$155.00
TUT-17	AMC416173	AMC416173	\$155.00
TUT-18	AMC416174	AMC416173	\$155.00
TUT-19	AMC416175	AMC416173	\$155.00
TUT-20	AMC416176	AMC416173	\$155.00
TUT-21	AMC416177	AMC416173	\$155.00
TUT-22	AMC416178	AMC416173	\$155.00
TUT-23	AMC416179	AMC416173	\$155.00
TUT-24	AMC416180	AMC416173	\$155.00
TUT-25	AMC416181	AMC416173	\$155.00
TUT-26	AMC416182	AMC416173	\$155.00
TUT-27	AMC416183	AMC416173	\$155.00
TUT-28	AMC416184	AMC416173	\$155.00
TUT-29	AMC416646	AMC416646	\$155.00
TUT-30	AMC416647	AMC416646	\$155.00
TUT-31	AMC416648	AMC416646	\$155.00
TUT-32	AMC416649	AMC416646	\$155.00
TUT-33	AMC416650	AMC416646	\$155.00
TUT-34	AMC416651	AMC416646	\$155.00
TUT-35	AMC416652	AMC416646	\$155.00
TUT-36	AMC416653	AMC416646	\$155.00

**NO WARRANTY IS MADE BY BLM FOR USE OF THE DATA FOR PURPOSES NOT INTENDED BY BLM**

Run Date: 08/12/15

Run Time: 08:37 AM

**DEPARTMENT OF THE INTERIOR  
BUREAU OF LAND MANAGEMENT  
MINING CLAIMS**

**MC Maintenance Fees Paid Through the BLM Pay Portal**

Claim Name	BLM Serial No	Lead File No	Amount Paid
TUT-37	AMC416654	AMC416646	\$155.00
TUT-38	AMC416655	AMC416646	\$155.00
TUT-39	AMC416656	AMC416646	\$155.00
TUT-40	AMC416657	AMC416646	\$155.00
TUT-41	AMC416658	AMC416646	\$155.00
TUT-42	AMC416659	AMC416646	\$155.00
TUT-43	AMC416660	AMC416646	\$155.00
TUT-44	AMC416661	AMC416646	\$155.00
TUT-45	AMC416662	AMC416646	\$155.00
TUT-46	AMC416663	AMC416646	\$155.00
TUT-47	AMC416664	AMC416646	\$155.00
TUT-48	AMC416665	AMC416646	\$155.00
TUT-49	AMC416666	AMC416646	\$155.00
TUT-50	AMC416667	AMC416646	\$155.00
TUT-51	AMC416668	AMC416646	\$155.00
TUT-52	AMC416669	AMC416646	\$155.00
TUT-53	AMC416670	AMC416646	\$155.00
TUT-54	AMC416671	AMC416646	\$155.00
TUT-55	AMC416672	AMC416646	\$155.00
TUT-56	AMC416673	AMC416646	\$155.00
TUT-57	AMC416674	AMC416646	\$155.00
TUT-58	AMC416675	AMC416646	\$155.00
TUT-59	AMC416676	AMC416646	\$155.00
TUT-60	AMC416677	AMC416646	\$155.00
TUT-61	AMC416678	AMC416646	\$155.00
TUT-62	AMC416679	AMC416646	\$155.00
TUT-63	AMC416680	AMC416646	\$155.00
TUT-64	AMC416681	AMC416646	\$155.00
TUT-65	AMC416682	AMC416646	\$155.00
TUT-66	AMC416683	AMC416646	\$155.00
TUT-67	AMC416684	AMC416646	\$155.00
TUT-68	AMC416685	AMC416646	\$155.00
TUT-69	AMC416686	AMC416646	\$155.00
TUT-70	AMC416687	AMC416646	\$155.00

**NO WARRANTY IS MADE BY BLM FOR USE OF THE DATA FOR PURPOSES NOT INTENDED BY BLM**

**United States Department of the Interior**  
**Bureau of Land Management**  
BUSINESS & SUPPORT SVCS DIV  
ONE N CENTRAL AVE SUITE 800  
PHOENIX, AZ 85004 -4427  
Phone: (602) 417-9200

Receipt

No: 3363626

<b>Transaction #:</b> 3461661	
<b>Date of Transaction:</b> 08/10/2015	
CUSTOMER:	
	THOMAS J ARKOOSH 10923 VALLEROSA STREET LAS VEGAS,NV 89141 US

LINE #	QTY	DESCRIPTION	REMARKS	UNIT PRICE	TOTAL
1	1.00	LOCATABLE MINERALS / MINING CLAIMS- NOT NEW-UNADJUD,ONE AUTH NO. ONLY / MINING CLAIM MONEY RECEIVED CASES: AMC414552/\$5115.00		- n/a -	5115.00
TOTAL:					\$5,115.00

PAYMENT INFORMATION				
NOTE: Items will appear on credit card statement as "BLM O Mining Claim".				
1	AMOUNT:	5115.00	POSTMARKED:	N/A
	TYPE:	CREDIT CARD	RECEIVED:	08/10/2015
	NAME:	THOMAS J ARKOOSH 10923 VALLEROSA STREET LAS VEGAS NV 89141 US		
	CARD NO:	XXXXXXXXXXXX2466	AUTH CODE:	101483
	NAME ON CARD:	THOMAS J ARKOOSH		
	EXPIRES:	12/2015		
	SIGNATURE:			

REMARKS

This receipt was generated by the automated BLM Collections and Billing System and is a paper representation of a portion of the official electronic record contained therein.



Run Date: 08/12/15

Run Time: 08:37 AM

**DEPARTMENT OF THE INTERIOR  
BUREAU OF LAND MANAGEMENT  
MINING CLAIMS**

**MC Maintenance Fees Paid Through the BLM Pay Portal**

**CBS Receipt: 3363627**

Printed For Lead File # AMC415013

Agency Tracking ID: 1439228150

Assessment Year: 2016

Number of BLM Serial Nr: 70

Paid On: 08/10/2015

Total Amount Paid: \$10,850.00

Claim Name	BLM Serial No	Lead File No	Amount Paid
TUT-1	AMC415013	AMC415013	\$155.00
TUT-2	AMC415014	AMC415013	\$155.00
TUT-3	AMC415015	AMC415013	\$155.00
TUT-4	AMC415016	AMC415013	\$155.00
TUT-5	AMC415017	AMC415013	\$155.00
TUT-6	AMC415018	AMC415013	\$155.00
TUT-7	AMC415019	AMC415013	\$155.00
TUT-8	AMC415020	AMC415013	\$155.00
TUT 9	AMC415597	AMC415597	\$155.00
TUT 10	AMC415598	AMC415597	\$155.00
TUT 11	AMC415599	AMC415597	\$155.00
TUT 12	AMC415600	AMC415597	\$155.00
TUT 13	AMC415601	AMC415597	\$155.00
TUT 14	AMC415602	AMC415597	\$155.00
TUT 15	AMC415603	AMC415597	\$155.00
TUT 16	AMC415604	AMC415597	\$155.00
TUT-17	AMC416173	AMC416173	\$155.00
TUT-18	AMC416174	AMC416173	\$155.00
TUT-19	AMC416175	AMC416173	\$155.00
TUT-20	AMC416176	AMC416173	\$155.00
TUT-21	AMC416177	AMC416173	\$155.00
TUT-22	AMC416178	AMC416173	\$155.00
TUT-23	AMC416179	AMC416173	\$155.00
TUT-24	AMC416180	AMC416173	\$155.00
TUT-25	AMC416181	AMC416173	\$155.00
TUT-26	AMC416182	AMC416173	\$155.00
TUT-27	AMC416183	AMC416173	\$155.00
TUT-28	AMC416184	AMC416173	\$155.00
TUT-29	AMC416646	AMC416646	\$155.00
TUT-30	AMC416647	AMC416646	\$155.00
TUT-31	AMC416648	AMC416646	\$155.00
TUT-32	AMC416649	AMC416646	\$155.00
TUT-33	AMC416650	AMC416646	\$155.00
TUT-34	AMC416651	AMC416646	\$155.00
TUT-35	AMC416652	AMC416646	\$155.00
TUT-36	AMC416653	AMC416646	\$155.00

**NO WARRANTY IS MADE BY BLM FOR USE OF THE DATA FOR PURPOSES NOT INTENDED BY BLM**

Run Date: 08/12/15

Run Time: 08:37 AM

**DEPARTMENT OF THE INTERIOR  
BUREAU OF LAND MANAGEMENT  
MINING CLAIMS**

**MC Maintenance Fees Paid Through the BLM Pay Portal**

Claim Name	BLM Serial No	Lead File No	Amount Paid
TUT-37	AMC416654	AMC416646	\$155.00
TUT-38	AMC416655	AMC416646	\$155.00
TUT-39	AMC416656	AMC416646	\$155.00
TUT-40	AMC416657	AMC416646	\$155.00
TUT-41	AMC416658	AMC416646	\$155.00
TUT-42	AMC416659	AMC416646	\$155.00
TUT-43	AMC416660	AMC416646	\$155.00
TUT-44	AMC416661	AMC416646	\$155.00
TUT-45	AMC416662	AMC416646	\$155.00
TUT-46	AMC416663	AMC416646	\$155.00
TUT-47	AMC416664	AMC416646	\$155.00
TUT-48	AMC416665	AMC416646	\$155.00
TUT-49	AMC416666	AMC416646	\$155.00
TUT-50	AMC416667	AMC416646	\$155.00
TUT-51	AMC416668	AMC416646	\$155.00
TUT-52	AMC416669	AMC416646	\$155.00
TUT-53	AMC416670	AMC416646	\$155.00
TUT-54	AMC416671	AMC416646	\$155.00
TUT-55	AMC416672	AMC416646	\$155.00
TUT-56	AMC416673	AMC416646	\$155.00
TUT-57	AMC416674	AMC416646	\$155.00
TUT-58	AMC416675	AMC416646	\$155.00
TUT-59	AMC416676	AMC416646	\$155.00
TUT-60	AMC416677	AMC416646	\$155.00
TUT-61	AMC416678	AMC416646	\$155.00
TUT-62	AMC416679	AMC416646	\$155.00
TUT-63	AMC416680	AMC416646	\$155.00
TUT-64	AMC416681	AMC416646	\$155.00
TUT-65	AMC416682	AMC416646	\$155.00
TUT-66	AMC416683	AMC416646	\$155.00
TUT-67	AMC416684	AMC416646	\$155.00
TUT-68	AMC416685	AMC416646	\$155.00
TUT-69	AMC416686	AMC416646	\$155.00
TUT-70	AMC416687	AMC416646	\$155.00

**NO WARRANTY IS MADE BY BLM FOR USE OF THE DATA FOR PURPOSES NOT INTENDED BY BLM**



Amc 413510  
413769  
414246

Amc 414552  
416173  
416646

### MAINTENANCE FEE PAYMENT

Claimant Name: AJA MINING LLC  
Address: 10923 Vallerosa Street  
City: LAS VEGAS State: NV Zip: 89141  
Telephone: 702-834-8775  
E-mail address: AJAMINING@Gmail.com  
Signature: Thomas J. Adkorn

☐ Check here if this is a change of address.

RECEIVED BLM AZ STATE OFFICE 2014 AUG 18 P 2:42 PHOENIX, ARIZONA BLM Date Stamp
---

LINE NO.	AMC NUMBER	CLAIM/SITE NAME	COUNTY RECORDER DATA (If available)	TWP	RNG	SEC
1	413510	AJA-1	2012002175	30N	17W	28
2	413511	AJA-2	2012002176	30N	17W	28
3	413512	AJA-3	2012002177	30N	17W	28
4	413513	AJA-4	2012002178	30N	17W	28
5	413514	AJA-5	2012002179	30N	17W	28
6	413515	AJA-6	2012002180	30N	17W	28
7	413516	AJA-7	2012002181	30N	17W	28
8	413517	AJA-8	2012002182	30N	17W	28
9	413518	AJA-9	2012002183	30N	17W	28
10	413519	AJA-10	2012002184	30N	17W	28

List additional claims on Form MCF114.

Bureau of Land Management  
Arizona State Office  
[www.blm.gov/az/](http://www.blm.gov/az/)

ENTERED  
AUG 22 2014  
BY: PB

No. of Claims: 83 x \$155 = 12,865  
Check No: 1090 Init. PA  
Receipt No.: 3105498  
For BLM Use Only

Form: MCF112  
Revised July 2009

This form is available from the Arizona Department of Mines and Mineral Resources and may be reproduced.



## SUPPLEMENTAL ATTACHMENT

May be used with the following forms for listing additional mining claims:

Check One.

- ☐ Affidavit of Performance of Annual Work  
☒ Maintenance Fee Payment  
☐ Notice of Intent to Hold Mining Claims  
☐ Notice of Non-Liability for Labor and Materials Furnished

BLM  
Date  
Stamp

RECEIVED  
BLM AZ STATE OFFICE  
2014 AUG 18 P 2:43  
PHOENIX, ARIZONA

LINE NO.	AMC NUMBER	CLAIM/SITE NAME	COUNTY RECORDER DATA (If available)	TWP	RNG	SEC
11	413520	AJA - 11	2012002 185	30N	17W	28
12	413521	AJA - 12	2012002 186	30N	17W	28
13	413769	AJA - 13	2012004 595	30N	17W	28
14	414246	AJA - 14	2012009 383	30N	17W	28
15	414247	AJA - 15	2012009 384	30N	17W	28
16	414248	AJA - 16	2012009 385	30N	17W	28
17	414249	AJA - 17	2012009 386	30N	17W	28
18	414552	AJA - 18	2012013 857	30N	17W	28
19	414553	AJA - 19	2012013 858	30N	17W	33
20	414554	AJA - 20	2012013 859	30N	17W	33
21	414555	AJA - 21	2012013 860	30N	17W	33
22	414556	AJA - 22	2012013 861	30N	17W	33
23	414557	AJA - 23	2012013 862	30N	17W	33
24	414558	AJA - 24	2012013 863	30N	17W	33
25	414559	AJA - 25	2012013 864	30N	17W	33
26	414560	AJA - 26	2012013 865	30N	17W	33
27	414561	AJA - 27	2012013 866	30N	17W	33
28	414562	AJA - 28	2012013 867	30N	17W	33
29	414563	AJA - 29	2012013 868	30N	17W	33

Form MCF114  
Revised June 2005

This form is available from the Arizona Department of Mines & Mineral Resources and may be reproduced.

# SUPPLEMENTAL ATTACHMENT

May be used with the following forms for listing additional mining claims:

Check One.

- ☐ Affidavit of Performance of Annual Work
- ☒ Maintenance Fee Payment
- ☐ Notice of Intent to Hold Mining Claims
- ☐ Notice of Non-Liability for Labor and Materials Furnished

RECEIVED	BLM AZ STATE OFFICE	2014 AUG 18 P 2:43	PHOENIX, ARIZONA
BLM Date Stamp			

LINE NO.	AMC NUMBER	CLAIM/SITE NAME	COUNTY RECORDER DATA (If available)	TWP	RNG	SEC
30	414564	AJA-30	2012013 869	30N	17W	34
31	414565	AJA-31	2012013 870	30N	17W	34
32	414566	AJA-32	2012013 871	30N	17W	33
33	414567	AJA-33	2012 013 872	30N	17W	28
34	416177	TUT-21	2012 027 296	29N	17W	4
35	416178	TUT-22	2012 027 297	29N	17W	4
36	416179	TUT-23	2012 027 298	29N	17W	4
37	416180	TUT-24	2012 027 299	29N	17W	4
38	416181	TUT-25	2012 027 300	30N	18W	33
39	416182	TUT-26	2012 027 301	30N	18W	33
40	416183	TUT-27	2012 027 302	30N	18W	33
41	416184	TUT-28	2012 027 303	30N	18W	33
42	416646	TUT-29	2012 035 096	29N	17W	9
43	416647	TUT-30	2012 035 097	29N	17W	9
44	416648	TUT-31	2012 035 098	29N	17W	17
45	416649	TUT-32	2012 035 099	29N	17W	16
46	416650	TUT-33	2012 035 100	29N	17W	17
47	416651	TUT-34	2012 035 101	29N	17W	16
48	416652	TUT-35	2012 035 102	29N	17W	17

Form MCF114  
Revised June 2005

This form is available from the Arizona Department of Mines & Mineral Resources and may be reproduced.

# SUPPLEMENTAL ATTACHMENT

May be used with the following forms for listing additional mining claims:

Check One.

- ☐ Affidavit of Performance of Annual Work  
☒ Maintenance Fee Payment  
☐ Notice of Intent to Hold Mining Claims  
☐ Notice of Non-Liability for Labor and Materials Furnished

RECEIVED BLM AZ STATE OFFICE 2014 AUG 18 P 2:43 PHOENIX, ARIZONA	BLM Date Stamp
---	----------------------

LINE NO.	AMC NUMBER	CLAIM/SITE NAME	COUNTY RECORDER DATA (If available)	TWP	RNG	SEC
49	416653	TUT-36	2012 035 103	29N	17W	16
50	416654	TUT-37	2012 035 104	29N	17W	17
51	416655	TUT-38	2012 035 105	29N	17W	16
52	416656	TUT-39	2012 035 106	29N	17W	17
53	416657	TUT-40	2012 035 107	29N	17W	16
54	416658	TUT-41	2012 035 108	29N	17W	17
55	416659	TUT-42	2012 035 109	29N	17W	16
56	416660	TUT-43	2012 035 110	29N	17W	17
57	416661	TUT-44	2012 035 111	29N	17W	16
58	416662	TUT-45	2012 035 112	29N	17W	17
59	416663	TUT-46	2012 035 113	29N	17W	16
60	416664	TUT-47	2012 035 114	29N	17W	16
61	416665	TUT-48	2012 035 115	29N	17W	16
62	416666	TUT-49	2012 035 116	29N	17W	16
63	416667	TUT-50	2012 035 117	29N	17W	16
64	416668	TUT-51	2012 035 118	29N	17W	16
65	416669	TUT-52	2012 035 119	29N	17W	16
66	416670	TUT-53	2012 035 120	29N	17W	16
67	416671	TUT-54	2012 035 121	29N	17W	16

Form MCF114  
Revised June 2005

This form is available from the Arizona Department of Mines & Mineral Resources and may be reproduced.



# SUPPLEMENTAL ATTACHMENT

May be used with the following forms for listing additional mining claims:

Check One.

- ☐ Affidavit of Performance of Annual Work  
☒ Maintenance Fee Payment  
☐ Notice of Intent to Hold Mining Claims  
☐ Notice of Non-Liability for Labor and Materials Furnished

RECEIVED BLM AZ STATE OFFICE 2011 AUG 18 P 2:43 PHOENIX, ARIZONA	BLM Date Stamp
---	----------------------

LINE NO.	AMC NUMBER	CLAIM/SITE NAME	COUNTY RECORDER DATA (If available)	TWP	RNG	SEC
68	416672	TUT-55	2012 035 122	29N	17W	17
69	416673	TUT-56	2012 035 123	29N	17W	17
70	416674	TUT-57	2012 035 124	29N	17W	17
71	416675	TUT-58	2012 035 125	29N	17W	17
72	416676	TUT-59	2012 035 126	29N	17W	17
73	416677	TUT-60	2012 035 127	29N	17W	17
74	416678	TUT-61	2012 035 128	29N	17W	17
75	416679	TUT-62	2012 035 129	29N	17W	17
76	416680	TUT-63	2012 035 130	29N	17W	17
77	416681	TUT-64	2012 035 131	29N	17W	17
78	416682	TUT-65	2012 035 132	29N	17W	17
79	416683	TUT-66	2012 035 133	29N	17W	17
80	416684	TUT-67	2012 035 134	29N	17W	17
81	416685	TUT-68	2012 035 135	29N	17W	17
82	416686	TUT-69	2012 035 136	29N	17W	17
83	416687	TUT-70	2012 035 137	29N	17W	17

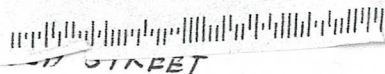
Form MCF114  
Revised June 2005

This form is available from the Arizona Department of Mines & Mineral Resources and may be reproduced.

10923 VAL

10923 VAL

LAS VEGAS, NV 89141



STREET

RECEIVED  
BLM AZ STATE OFFICE

2014 AUG 18 P 2:42

PHOENIX, ARIZONA



1000



85004

U.S. POSTAGE  
PAID  
LAS VEGAS, NV  
89123  
AUG 15, 14  
AMOUNT

\$1.19  
00019941-08

Bureau of Land Management  
ARIZONA STATE OFFICE  
ONE NORTH CENTRAL AVENUE  
SUITE 800  
PHOENIX, AZ 85004-4427

**United States Department of the Interior**  
**Bureau of Land Management**  
 LANDS/RECREATION & PLANNING  
 ONE N CENTRAL AVE  
 PHOENIX, AZ 85004 -2203  
 Phone: 602-417-9200

Receipt

No: 3105498

Transaction #: 3197146		<b>ENTERED INTO COMPUTER</b>
Date of Transaction: 08/19/2014		
CUSTOMER:		
AJA MINING LLC 10923 VALLEROSA ST LAS VEGAS,NV 89141-3927 US		

LINE #	QTY	DESCRIPTION	REMARKS	UNIT PRICE	TOTAL
1	1.00	LOCATABLE MINERALS / MINING CLAIMS-NOT NEW-UNADJUD,ONE AUTH NO. ONLY / MINING CLAIM MONEY RECEIVED CASES: AMC413510/\$12865.00	MAINT FEE PYMNT (83) 2015	- n/a -	12865.00
<b>TOTAL:</b>					<b>\$12,865.00</b>

PAYMENT INFORMATION			
1	AMOUNT:	12865.00	POSTMARKED: 08/15/2014
	TYPE:	CHECK	RECEIVED: 08/18/2014
	CHECK NO:	1090	
	NAME:	AJA MINING LLC 10923 VALLEROSA ST LAS VEGAS NV 89141-3927 US	

REMARKS

This receipt was generated by the automated BLM Collections and Billing System and is a paper representation of a portion of the official electronic record contained therein.

Amc 413510-521

413769

414246-249

414552-567

416177-184

416646-687



## Message:

83 ROWS RETRIEVED

## CBS Export Results Report

☐ Include Resolved Records

Record Status

☐ Error Records (E/M/I)☐ Accepted Records (A/W)☐ "On Hold" Records (H)☒ All Records (for s/n or receipt nr)☐ Exported, No Results From CBS☐ New (not yet exported)Enter export Date (mm/dd/yyyy) Serial Number match (optional) Receipt Nr (optional) Export Nr (exclusive) LR2000 User (defaults to login) 

Responsible Area (Errors Only)

☐ User (U,X)☐ Programmer (P,X)☒ All (U,P,X)[User Guide](#)[Printable Format \(legal/landscape\)](#)

		Resend?	Export Nr	A/D	Serial Nr	Mult	Code	\$ Amount	Remarks	Receipt Nr	LR2000 User	#Msg	Resolved?	OK	Stat1	Area	CBS Msg 1	Stat2	Area	Msg 2	CBS 392 ID	392 \$ Amt	Action	Update Date	Resend	Resend Orig	Export Date
<div>⏮ ⏪ ⏩ ⏭</div>	1	<input type="checkbox"/>	4660308	A	AMC413510		782	155.00	2015;\$155	3105498	PAULINEB	1	<input type="checkbox"/>		A		ACCP				2082385	12865.00	8/22/2014 9:25				8/22/2014
	2	<input type="checkbox"/>	4660309	A	AMC413511		782	155.00	2015;\$155	3105498	PAULINEB	1	<input type="checkbox"/>		A		ACCP				2082385	12865.00	8/22/2014 9:25				8/22/2014
	3	<input type="checkbox"/>	4660310	A	AMC413512		782	155.00	2015;\$155	3105498	PAULINEB	1	<input type="checkbox"/>		A		ACCP				2082385	12865.00	8/22/2014 9:25				8/22/2014
	4	<input type="checkbox"/>	4660311	A	AMC413513		782	155.00	2015;\$155	3105498	PAULINEB	1	<input type="checkbox"/>		A		ACCP				2082385	12865.00	8/22/2014 9:25				8/22/2014
	5	<input type="checkbox"/>	4660312	A	AMC413514		782	155.00	2015;\$155	3105498	PAULINEB	1	<input type="checkbox"/>		A		ACCP				2082385	12865.00	8/22/2014 9:25				8/22/2014
	6	<input type="checkbox"/>	4660313	A	AMC413515		782	155.00	2015;\$155	3105498	PAULINEB	1	<input type="checkbox"/>		A		ACCP				2082385	12865.00	8/22/2014 9:25				8/22/2014
	7	<input type="checkbox"/>	4660314	A	AMC413516		782	155.00	2015;\$155	3105498	PAULINEB	1	<input type="checkbox"/>		A		ACCP				2082385	12865.00	8/22/2014 9:25				8/22/2014
	8	<input type="checkbox"/>	4660315	A	AMC413517		782	155.00	2015;\$155	3105498	PAULINEB	1	<input type="checkbox"/>		A		ACCP				2082385	12865.00	8/22/2014 9:25				8/22/2014
	9	<input type="checkbox"/>	4660316	A	AMC413518		782	155.00	2015;\$155	3105498	PAULINEB	1	<input type="checkbox"/>		A		ACCP				2082385	12865.00	8/22/2014 9:25				8/22/2014
	10	<input type="checkbox"/>	4660317	A	AMC413519		782	155.00	2015;\$155	3105498	PAULINEB	1	<input type="checkbox"/>		A		ACCP				2082385	12865.00	8/22/2014 9:25				8/22/2014
	11	<input type="checkbox"/>	4660318	A	AMC413520		782	155.00	2015;\$155	3105498	PAULINEB	1	<input type="checkbox"/>		A		ACCP				2082385	12865.00	8/22/2014 9:25				8/22/2014
	12	<input type="checkbox"/>	4660319	A	AMC413521		782	155.00	2015;\$155	3105498	PAULINEB	1	<input type="checkbox"/>		A		ACCP				2082385	12865.00	8/22/2014 9:25				8/22/2014
	13	<input type="checkbox"/>	4660323	A	AMC413769		782	155.00	2015;\$155	3105498	PAULINEB	1	<input type="checkbox"/>		A		ACCP				2082385	12865.00	8/22/2014 9:26				8/22/2014
	14	<input type="checkbox"/>	4660324	A	AMC414246		782	155.00	2015;\$155	3105498	PAULINEB	1	<input type="checkbox"/>		A		ACCP				2082385	12865.00	8/22/2014 9:27				8/22/2014
	15	<input type="checkbox"/>	4660325	A	AMC414247		782	155.00	2015;\$155	3105498	PAULINEB	1	<input type="checkbox"/>		A		ACCP				2082385	12865.00	8/22/2014 9:27				8/22/2014
	16	<input type="checkbox"/>	4660326	A	AMC414248		782	155.00	2015;\$155	3105498	PAULINEB	1	<input type="checkbox"/>		A		ACCP				2082385	12865.00	8/22/2014 9:27				8/22/2014
	17	<input type="checkbox"/>	4660327	A	AMC414249		782	155.00	2015;\$155	3105498	PAULINEB	1	<input type="checkbox"/>		A		ACCP				2082385	12865.00	8/22/2014 9:27				8/22/2014
	18	<input type="checkbox"/>	4660328	A	AMC414552		782	155.00	2015;\$155	3105498	PAULINEB	1	<input type="checkbox"/>		A		ACCP				2082385	12865.00	8/22/2014 9:27				8/22/2014
	19	<input type="checkbox"/>	4660329	A	AMC414553		782	155.00	2015;\$155	3105498	PAULINEB	1	<input type="checkbox"/>		A		ACCP				2082385	12865.00	8/22/2014 9:27				8/22/2014
	20	<input type="checkbox"/>	4660330	A	AMC414554		782	155.00	2015;\$155	3105498	PAULINEB	1	<input type="checkbox"/>		A		ACCP				2082385	12865.00	8/22/2014 9:27				8/22/2014

AMC 413510

AMC 415013

413769

415597

414246

416173

414552

416646

## MAINTENANCE FEE PAYMENT

Claimant Name: AJA Mining LLCAddress: 10923 Vallerosa StreetCity: Las Vegas State: NV Zip: 89141Telephone: 702-834-8775E-mail address: AJAMining@gmail.comSignature: Thomas J. Ashorsh☐ Check here if this is a change of address.BLM  
Date  
StampRECEIVED  
BLM AZ STATE OFFICE  
2012 AUG 20 A 10:41  
PHOENIX, ARIZONA

LINE NO.	AMC NUMBER	CLAIM/SITE NAME	COUNTY RECORDER DATA (If available)	TWP	RNG	SEC
1	413510	AJA - 1	2012002175	30N	17W	28
2	413511	AJA - 2	2012002176	30N	17W	28
3	413512	AJA - 3	2012002177	30N	17W	28
4	413513	AJA - 4	2012002178	30N	17W	28
5	413514	AJA - 5	2012002179	30N	17W	28
6	413515	AJA - 6	2012002180	30N	17W	28
7	413516	AJA - 7	2012002181	30N	17W	28
8	413517	AJA - 8	2012002182	30N	17W	28
9	413518	AJA - 9	2012002183	30N	17W	28
10	413519	AJA - 10	2012002184	30N	17W	28

List additional claims on Form MCF114.

Bureau of Land Management  
Arizona State Office  
www.blm.gov/az/No. of Claims: 103 x \$140 = 14420.00Check No: 1070 Init. AAReceipt No.: 2635573

For BLM Use Only

Form: MCF112  
Revised July 2009

This form is available from the Arizona Department of Mines and Mineral Resources and may be reproduced.

ENTERED INTO COMPUTER

8/31/12 AT

SUPPLEMENTAL ATTACHMENT

May be used with the following forms for listing additional mining claims:  
Check One.

- ☐ Affidavit of Performance of Annual Work  
☒ Maintenance Fee Payment  
☐ Notice of Intent to Hold Mining Claims  
☐ Notice of Non-Liability for Labor and Materials Furnished

RECEIVED  
 BLM  
 Date  
 Stamp  
 2012 AUG 20 A 10:41  
 PHOENIX, ARIZONA  
 BLM AZ STATE OFFICE

LINE NO.	AMC NUMBER	CLAIM/SITE NAME	COUNTY RECORDER DATA (If available)	TWP	RNG	SEC
11	413520	AJA - 11	2012002 185	30N	17W	28
12	413521	AJA - 12	2012002 186	30N	17W	28
13	413769	AJA - 13	2012004 595	30N	17W	28
14	414246	AJA - 14	2012009 383	30N	17W	28
15	414247	AJA - 15	2012009 384	30N	17W	28
16	414248	AJA - 16	2012009 385	30N	17W	28
17	414249	AJA - 17	2012009 386	30N	17W	28
18	414552	AJA - 18	2012013 857	30N	17W	28
19	414553	AJA - 19	2012013 858	30N	17W	33
20	414554	AJA - 20	2012013 859	30N	17W	33
21	414555	AJA - 21	2012013 860	30N	17W	33
22	414556	AJA - 22	2012013 861	30N	17W	33
23	414557	AJA - 23	2012013 862	30N	17W	33
24	414558	AJA - 24	2012013 863	30N	17W	33
25	414559	AJA - 25	2012013 864	30N	17W	33
26	414560	AJA - 26	2012013 865	30N	17W	33
27	414561	AJA - 27	2012013 866	30N	17W	33
28	414562	AJA - 28	2012013 867	30N	17W	33
29	414563	AJA - 29	2012013 868	30N	17W	33

Form MCF114  
 Revised June 2005



# SUPPLEMENTAL ATTACHMENT

May be used with the following forms for listing additional mining claims:

Check One.

- ☐ Affidavit of Performance of Annual Work
- ☒ Maintenance Fee Payment
- ☐ Notice of Intent to Hold Mining Claims
- ☐ Notice of Non-Liability for Labor and Materials Furnished

BLM  
Date  
Stamp

PHOENIX, ARIZONA

2012 AUG 20 A 10:11

RECEIVED  
BLM AZ STATE OFFICE

LINE NO.	AMC NUMBER	CLAIM/SITE NAME	COUNTY RECORDER DATA (If available)	TWP	RNG	SEC
30	414564	AJA - 30	2012013869	30N	17W	34
31	414565	AJA - 31	2012013870	30N	17W	34
32	414566	AJA - 32	2012013871	30N	17W	33
33	414567	AJA - 33	2012013872	30N	17W	28
34	415013	TUT - 1	2012017517	29N	17W	4
35	415014	TUT - 2	2012017518	29N	17W	4
36	415015	TUT - 3	2012017519	29N	17W	4
37	415016	TUT - 4	2012017520	29N	17W	4
38	415017	TUT - 5	2012017521	29N	17W	4
39	415018	TUT - 6	2012017522	29N	17W	4
40	415019	TUT - 7	2012017523	29N	17W	4
41	415020	TUT - 8	2012017524	29N	17W	4
42	415597	TUT - 9	2012020876	29N	17W	4
43	415598	TUT - 10	2012020877	29N	17W	4
44	415599	TUT - 11	2012020878	29N	17W	4
45	415600	TUT - 12	2012020879	29N	17W	4
46	415601	TUT - 13	2012020880	29N	17W	9
47	415602	TUT - 14	2012020881	29N	17W	9
48	415603	TUT - 15	2012020882	29N	17W	9

ENTERED INTO COMPUTER

Form MCF114  
Revised June 2005

This form is available from the Arizona Department of Mines & Mineral Resources and may be reproduced.

**SUPPLEMENTAL ATTACHMENT**

May be used with the following forms for listing additional mining claims:

Check One.

- ☐ Affidavit of Performance of Annual Work  
☒ Maintenance Fee Payment  
☐ Notice of Intent to Hold Mining Claims  
☐ Notice of Non-Liability for Labor and Materials Furnished

RECEIVED  
 BLM AZ STATE OFFICE  
 2012 AUG 20 A 10:41  
 PHOENIX, ARIZONA  
 BLM  
 Date  
 Stamp

LINE NO.	AMC NUMBER	CLAIM/SITE NAME	COUNTY RECORDER DATA (If available)	TWP	RNG	SEC
49	415604	TUT-16	2012020883	29N	17W	9
50	416173	TUT-17	2012027292	29N	17W	4
51	416174	TUT-18	2012027293	29N	17W	4
52	416175	TUT-19	2012027294	29N	17W	4
53	416176	TUT-20	2012027295	29N	17W	4
54	416177	TUT-21	2012027296	29N	17W	4
55	416178	TUT-22	2012027297	29N	17W	4
56	416179	TUT-23	2012027298	29N	17W	4
57	416180	TUT-24	2012027299	29N	17W	4
58	416181	TUT-25	2012027300	30N	18W	33
59	416182	TUT-26	2012027301	30N	18W	33
60	416183	TUT-27	2012027302	30N	18W	33
61	416184	TUT-28	2012027303	30N	18W	33
62	416646	TUT-29	2012035096	29N	17W	9
63	416647	TUT-30	2012035097	29N	17W	9
64	416648	TUT-31	2012035098	29N	17W	17
65	416649	TUT-32	2012035099	29N	17W	16
66	416650	TUT-33	2012035100	29N	17W	17
67	416651	TUT-34	2012035101	29N	17W	16

Form MCF114  
 Revised June 2005

This form is available from the Arizona Department of Mines & Mineral Resources and may be reproduced.

# SUPPLEMENTAL ATTACHMENT

May be used with the following forms for listing additional mining claims:

Check One.

- ☐ Affidavit of Performance of Annual Work
- ☒ Maintenance Fee Payment
- ☐ Notice of Intent to Hold Mining Claims
- ☐ Notice of Non-Liability for Labor and Materials Furnished

BLM  
Date  
Stamp

RECEIVED  
BLM AZ STATE OFFICE  
2012 AUG 20 A 10:41  
PHOENIX, ARIZONA

LINE NO.	AMC NUMBER	CLAIM/SITE NAME	COUNTY RECORDER DATA (If available)	TWP	RNG	SEC
68	416652	TUT-35	2012035102	29N	17W	17
69	416653	TUT-36	2012035103	29N	17W	16
70	416654	TUT-37	2012035104	29N	17W	17
71	416655	TUT-38	2012035105	29N	17W	16
72	416656	TUT-39	2012035106	29N	17W	17
73	416657	TUT-40	2012035107	29N	17W	16
74	416658	TUT-41	2012035108	29N	17W	17
75	416659	TUT-42	2012035109	29N	17W	16
76	416660	TUT-43	2012035110	29N	17W	17
77	416661	TUT-44	2012035111	29N	17W	16
78	416662	TUT-45	2012035112	29N	17W	17
79	416663	TUT-46	2012035113	29N	17W	16
80	416664	TUT-47	2012035114	29N	17W	16
81	416665	TUT-48	2012035115	29N	17W	16
82	416666	TUT-49	2012035116	29N	17W	16
83	416667	TUT-50	2012035117	29N	17W	16
84	416668	TUT-51	2012035118	29N	17W	16
85	416669	TUT-52	2012035119	29N	17W	16
86	416670	TUT-53	2012035120	29N	17W	16

ENTERED INTO COMPUTER

Form MCF114  
Revised June 2005

This form is available from the Arizona Department of Mines & Mineral Resources and may be reproduced.



# SUPPLEMENTAL ATTACHMENT

May be used with the following forms for listing additional mining claims:

Check One.

- ☐ Affidavit of Performance of Annual Work
- ☒ Maintenance Fee Payment
- ☐ Notice of Intent to Hold Mining Claims
- ☐ Notice of Non-Liability for Labor and Materials Furnished

RECEIVED BLM AZ STATE OFFICE 2012 AUG 20 A 10:4 PHOENIX, ARIZONA	BLM Date Stamp
---	----------------------

LINE NO.	AMC NUMBER	CLAIM/SITE NAME	COUNTY RECORDER DATA (If available)	TWP	RNG	SEC
87	416671	TUT - 54	2012035121	29N	17W	16
88	416672	TUT - 55	2012035122	29N	17W	17
89	416673	TUT - 56	2012035123	29N	17W	17
90	416674	TUT - 57	2012035124	29N	17W	17
91	416675	TUT - 58	2012035125	29N	17W	17
92	416676	TUT - 59	2012035126	29N	17W	17
93	416677	TUT - 60	2012035127	29N	17W	17
94	416678	TUT - 61	2012035128	29N	17W	17
95	416679	TUT - 62	2012035129	29N	17W	17
96	416680	TUT - 63	2012035130	29N	17W	17
97	416681	TUT - 64	2012035131	29N	17W	17
98	416682	TUT - 65	2012035132	29N	17W	17
99	416683	TUT - 66	2012035133	29N	17W	17
100	416684	TUT - 67	2012035134	29N	17W	17
101	416685	TUT - 68	2012035135	29N	17W	17
102	416686	TUT - 69	2012035136	29N	17W	17
103	416687	TUT - 70	2012035137	29N	17W	17

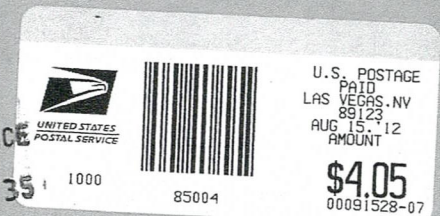
Form MCF114  
Revised June 2005

This form is available from the Arizona Department of Mines & Mineral Resources and may be reproduced.

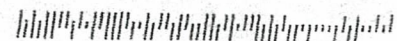
AJA Mining LLC  
10923 Vallerosa St.  
Las Vegas, NV 89141



RECEIVED  
BLM AZ STATE OFFICE  
2012 AUG 20 A 10:35  
PHOENIX, ARIZONA



Bureau of Land Management  
One North Central Ave.  
Suite 800  
Phoenix, AZ 85004-4427





United States Department of the Interior  
 Bureau of Land Management  
 LANDS/RECREATION & PLANNING  
 ONE N CENTRAL AVE  
 PHOENIX, AZ 85004 -2203  
 Phone: 602-417-9200

Receipt

No: 2635573

Transaction #: 2716152

Date of Transaction: 08/21/2012

**ENTERED INTO COMPUTER**

CUSTOMER:

AJA MINING LLC  
 10923 VALLEROSA ST  
 LAS VEGAS, NV 89141-3927 US

LINE #	QTY	DESCRIPTION	REMARKS	UNIT PRICE	TOTAL
1	1.00	LOCATABLE MINERALS / MINING CLAIMS-NOT NEW-UNADJUD, ONE AUTH NO. ONLY / MINING CLAIM MONEY RECEIVED CASES: AMC413510/\$14420.00	MAINT FEE PYMNT (103) 2013	- n/a -	14420.00
<b>TOTAL:</b>					<b>\$14,420.00</b>

## PAYMENT INFORMATION

1	AMOUNT:	14420.00	POSTMARKED:	N/A
	TYPE:	CHECK	RECEIVED:	08/20/2012
	CHECK NO:	1070		
	NAME:	AJA MINING LLC 10923 VALLEROSA ST LAS VEGAS NV 89141-3927 US		

## REMARKS

This receipt was generated by the automated BLM Collections and Billing System and is a paper representation of a portion of the official electronic record contained therein. Lead AMC #5 (PB)

AMC 413510

413769

414246

414552

415013

415597

416173

416646



**NOTICE!!**

**These documents have been scanned!**

**Do not place un-scanned documents beneath this notice!**

**Do not remove this notice from this file!**

GPO Jacket No. 560-102  
Print Order 61540  
Rise Business Services, LLC  
Job=AZ15 5/14/2019



Box Number= AZ15049



Claim Begin-End: AMC414552-AMC414567

6 Location Notices-Amendments and Supporting Documents



AZ15049-10

AMC414434-AMC414683

# Mining Claim Status Report

DATA  
ENTERED MAR 30 2012 *pb*

MTP Checked by MAR 30 2012 *pb*

GEO Checked by MAR 30 2012 *pb*

LEAD SERIAL NUMBER AMC 414552 thru AMC 414567

## # OF CLAIMS & TYPE

# 16 LODE  
# \_\_\_\_\_ PLACER  
# \_\_\_\_\_ ASSOCIATION PLACER  
# \_\_\_\_\_ MILL SITE  
# \_\_\_\_\_ TUNNEL SITE

## CHARGES

Location Fee @ \$34 = \$ 544.00  
Processing Fee @ \$15 = \$ 240.00  
Maintenance Fee @ \$140 = \$ 2240.00  
Overage ( + ) \$ \_\_\_\_\_  
Shortage ( - ) \$ \_\_\_\_\_  
Other Fees \$ \_\_\_\_\_  
**TOTAL** \$ 3024.00

## ARE THERE ENOUGH LOCATORS?

Yes ☒ No ☐

## DOCUMENTS RECEIVED VIA -

Over-the-Counter ☐ Mail ☒

## TIMELY FILED?

Yes ☒ No ☐

LEGAL DESCRIPTION - T 30N R 17W SEC 28,33,34  
T \_\_\_\_\_ R \_\_\_\_\_ SEC \_\_\_\_\_  
T \_\_\_\_\_ R \_\_\_\_\_ SEC \_\_\_\_\_  
T \_\_\_\_\_ R \_\_\_\_\_ SEC \_\_\_\_\_

BLM ☐ FOREST SERVICE ☐ SUBJ TO PL 359: Yes ☐ No ☐

WILDERNESS AREA: No ☐ Yes ☐

SPLIT ESTATE - N/A ☐ SX ☐ PX ☐ SRHA ☐ OTHER ☐

Proper Notice Filed if Located on SHRA Lands? N/A ☐ Yes ☐ No ☐

## RECONVEYED MINERALS ON BLM LANDS REQUIRE OPENING ORDERS FROM 1944 TO 1993 -

Open to Entry on: \_\_\_\_\_ N/A ☐

COMMENTS/STATUS - VOID ☐ PARTIALLY VOID ☐ PVT MINERALS ☐ WITHDRAWN LANDS ☐  
OTHER ☐

Claimant acknowledges that portions of the following claims(s) site(s) may be void or voidable.

Printed Name of Claimant \_\_\_\_\_ Signature of Claimant \_\_\_\_\_

\*\*\*\*\* FINAL ADJUDICATION \*\*\*\*\*

DATE 6/28/2012 INITIALS TS

AMC414552



2

FEE# 2012013857

OFFICIAL RECORDS  
OF MOHAVE COUNTY  
CAROL MEIER,  
COUNTY RECORDER



03/20/2012 11:14 AM Fee: \$10.00

PAGE: 1 of 2

LOCATION NOTICE FOR LODE MINING CLAIM

NOTICE IS HEREBY GIVEN that the AJA - 18

\_\_\_\_\_ lode mining claim has been located

by AJA MINING LLC whose current mailing  
address is 10923 VALLEROSA ST,  
LAS VEGAS, NV 89141

BLM  
Date  
Stamp

The general course of this claim is EAST-WEST and it is situated in MOHAVE  
County, Arizona. This claim is 1500 feet in length and 600 feet in width. This claim runs  
from the location monument on which this location notice is posted approximately 20 feet in a  
EAST direction to the EAST end line and 1480 feet in a WEST direction to the  
WEST end line. This claim is marked by six monuments, one at each corner and one at the center of each  
end line of the claim.

The location monument on which this notice is posted is situated within Section 33, Township 30  
N, Range 17 W, Gila Salt River Base and Meridian, Arizona and this claim encompasses portions  
of the following quarter section (s), section (s), Township (s) and Range (s) NW 1/4, NE 1/4 SEC 33,  
T30N, R 17W

Gila Salt River Base and Meridian, Arizona.

The locality of this claim with reference to some natural object or permanent monument and additional information  
(if any) concerning its locality are as follows: SOUTH OF TUT PEAK  
(USGS MARKER)

DATED AND POSTED on the ground this 20th day of MARCH, 20 12

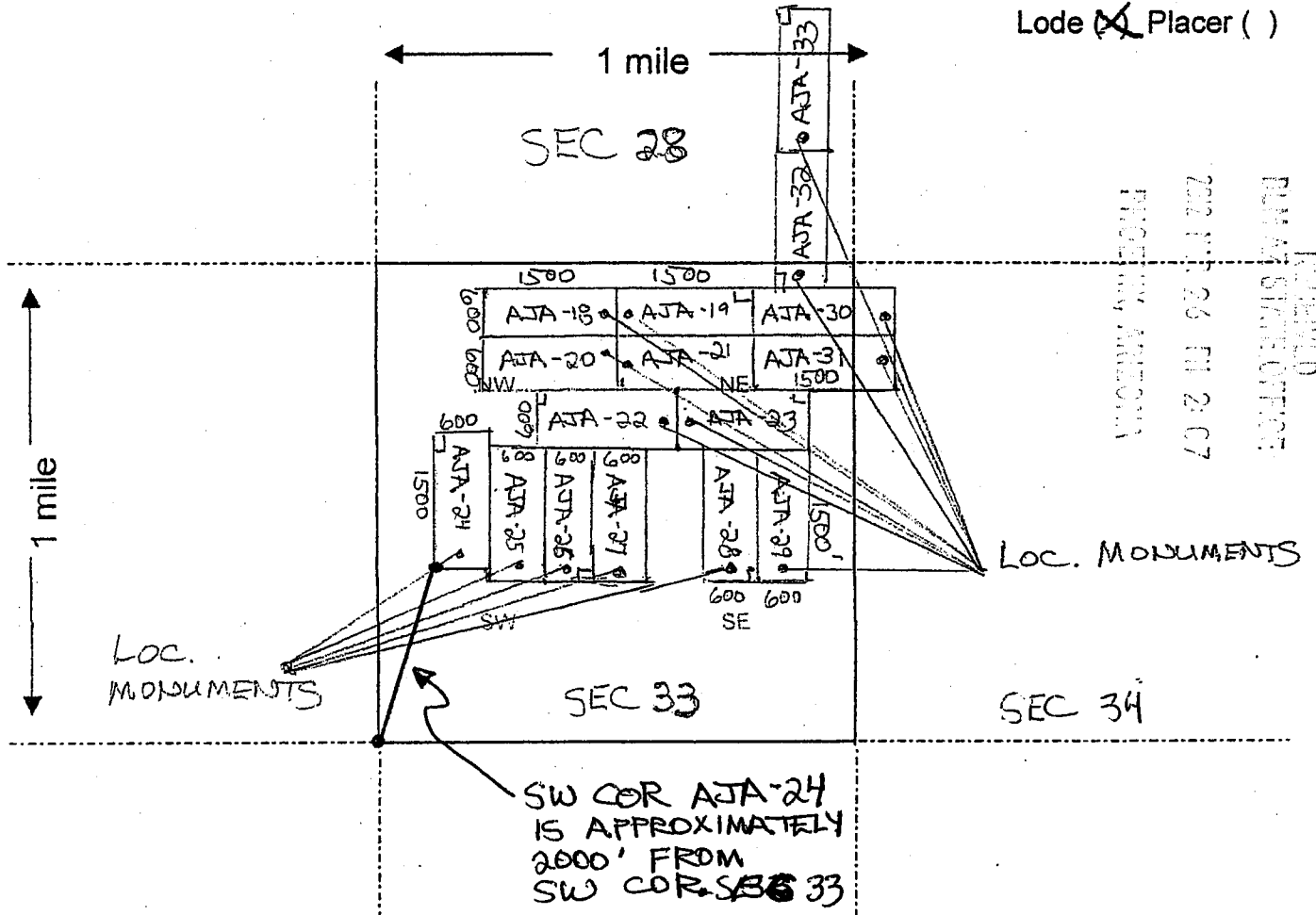
LOCATOR (s) Keith Jay  
KEITH JAY

Form MCF100  
Revised July 2005



# MINING CLAIM MAP

Lode ☒ Placer ( )



- The above map depicts the AJA-18 mining claim, which is located in Section (s) 33, Township 30 N, Range 17 W, Gila and Salt River Base and Meridian, MOHAVE County, Arizona.
- The type of corner and location monuments used are as follows: 2" x 2" WOODEN POSTS 4 FEET HIGH
- The bearings and distances in degrees and feet between claim corners are as depicted on the map.

Form MCF100a  
Revised July 2005

This form is available from the Arizona Department of Mines & Mineral Resources and may be reproduced.

AMC414552

2

FEE# 2012013858

OFFICIAL RECORDS  
OF MOHAVE COUNTY  
CAROL MEIER,  
COUNTY RECORDER



03/20/2012 11:14 AM Fee: \$10.00

PAGE: 1 of 2

LOCATION NOTICE FOR LODE MINING CLAIM

NOTICE IS HEREBY GIVEN that the AJA-19

\_\_\_\_\_ lode mining claim has been located

by AJA MINING LLC whose current mailing  
address is 10923 VALLEROSA ST.,  
LAS VEGAS, NV 89141

BLM  
Date  
Stamp

2012 MAR 26 PM 2:07  
RECEIVED  
BLM STATE OFFICE

The general course of this claim is EAST - WEST and it is situated in MOHAVE

County, Arizona. This claim is 1500 feet in length and 600 feet in width. This claim runs

from the location monument on which this location notice is posted approximately 20 feet in a

WEST direction to the WEST end line and 1480 feet in a EAST direction to the

EAST end line. This claim is marked by six monuments, one at each corner and one at the center of each

end line of the claim.

The location monument on which this notice is posted is situated within Section 33, Township 30

N, Range 17 W, Gila Salt River Base and Meridian, Arizona and this claim encompasses portions

of the following quarter section (s), section (s), Township (s) and Range (s) NE 1/4 SEC 33,

T 30 N, R 17 W

Gila Salt River Base and Meridian, Arizona.

The locality of this claim with reference to some natural object or permanent monument and additional information

(if any) concerning its locality are as follows: SOUTH OF TUT PEAK

(USGS MARKER)

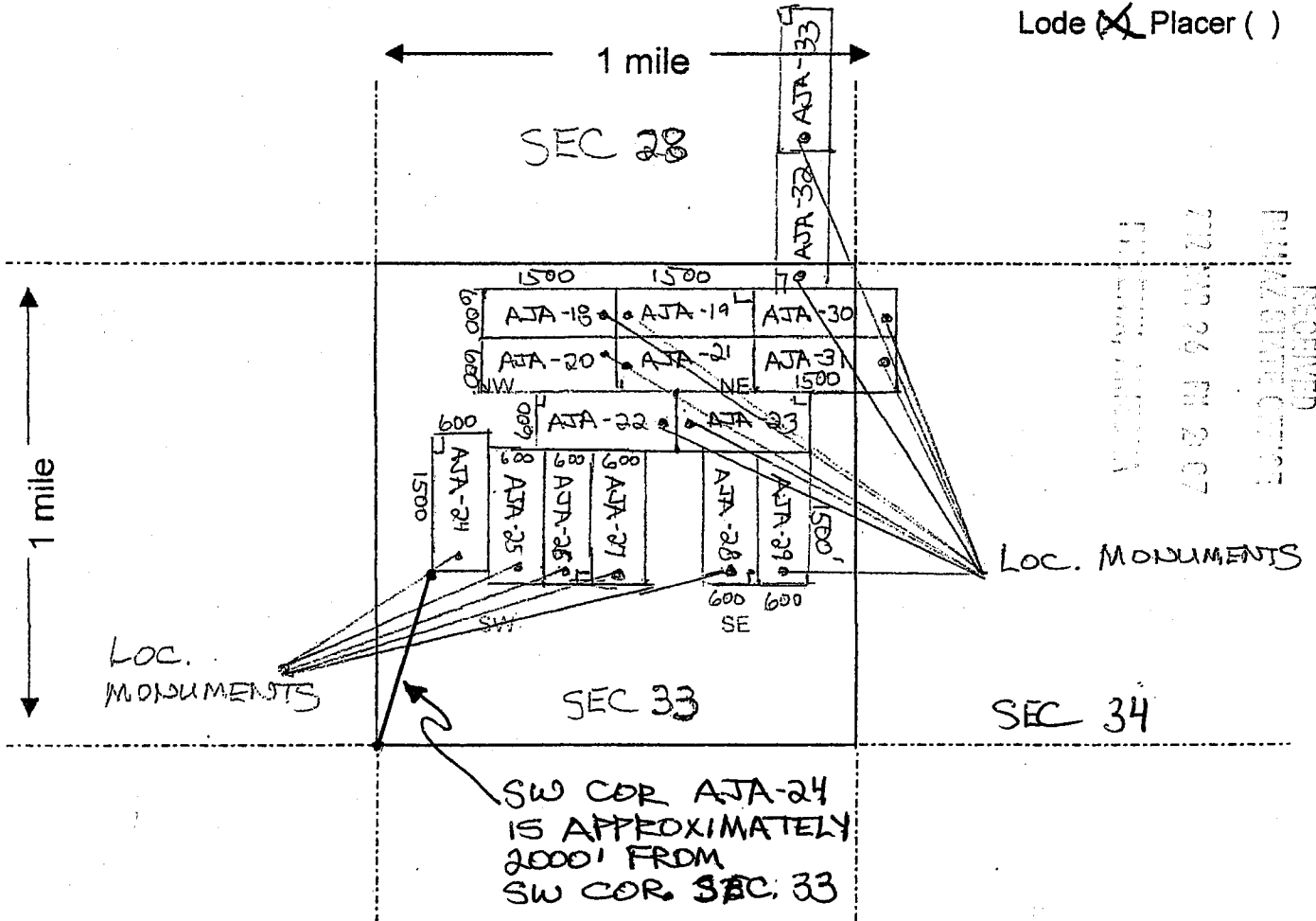
DATED AND POSTED on the ground this 20th day of MARCH, 2012

LOCATOR (s) Keth Jay  
KETH JAY

Form MCF100  
Revised July 2005

# MINING CLAIM MAP

Lode ☒ Placer ( )



Scale : 1" = 2000 feet



1. The above map depicts the AJA-19 mining claim, which is located in Section (s) 33, Township 30 N, Range 17 W, Gila and Salt River Base and Meridian, MOHAVE County, Arizona.
2. The type of corner and location monuments used are as follows: 2" x 2" WOODEN POSTS 4 FEET HIGH
3. The bearings and distances in degrees and feet between claim corners are as depicted on the map.

Form MCF100a  
Revised July 2005

This form is available from the Arizona Department of Mines & Mineral Resources and may be reproduced.

AMC414553



FEE# 2012013859

OFFICIAL RECORDS  
OF MOHAVE COUNTY  
CAROL MEIER,  
COUNTY RECORDER



03/20/2012 11:14 AM Fee: \$10.00

PAGE: 1 of 2

LOCATION NOTICE FOR LODE MINING CLAIM

NOTICE IS HEREBY GIVEN that the AJA - 20

\_\_\_\_\_ lode mining claim has been located

by AJA MINING LLC whose current mailing  
address is 10923 VALLEROSA ST,  
LAS VEGAS, NV 89141 /

BLM  
Date  
Stamp

RECEIVED  
BLM AZ STATE OFFICE

The general course of this claim is EAST-WEST and it is situated in MOHAVE  
County, Arizona. This claim is 1500 feet in length and 600 feet in width. This claim runs  
from the location monument on which this location notice is posted approximately 20 feet in a  
EAST direction to the EAST end line and 1480 feet in a WEST direction to the  
WEST end line. This claim is marked by six monuments, one at each corner and one at the center of each  
end line of the claim.

The location monument on which this notice is posted is situated within Section 33, Township 30  
N, Range 17 W, Gila Salt River Base and Meridian, Arizona and this claim encompasses portions  
of the following quarter section (s), section (s), Township (s) and Range (s) NW 1/4, NE 1/4 SEC 33,  
T30N, R 17W

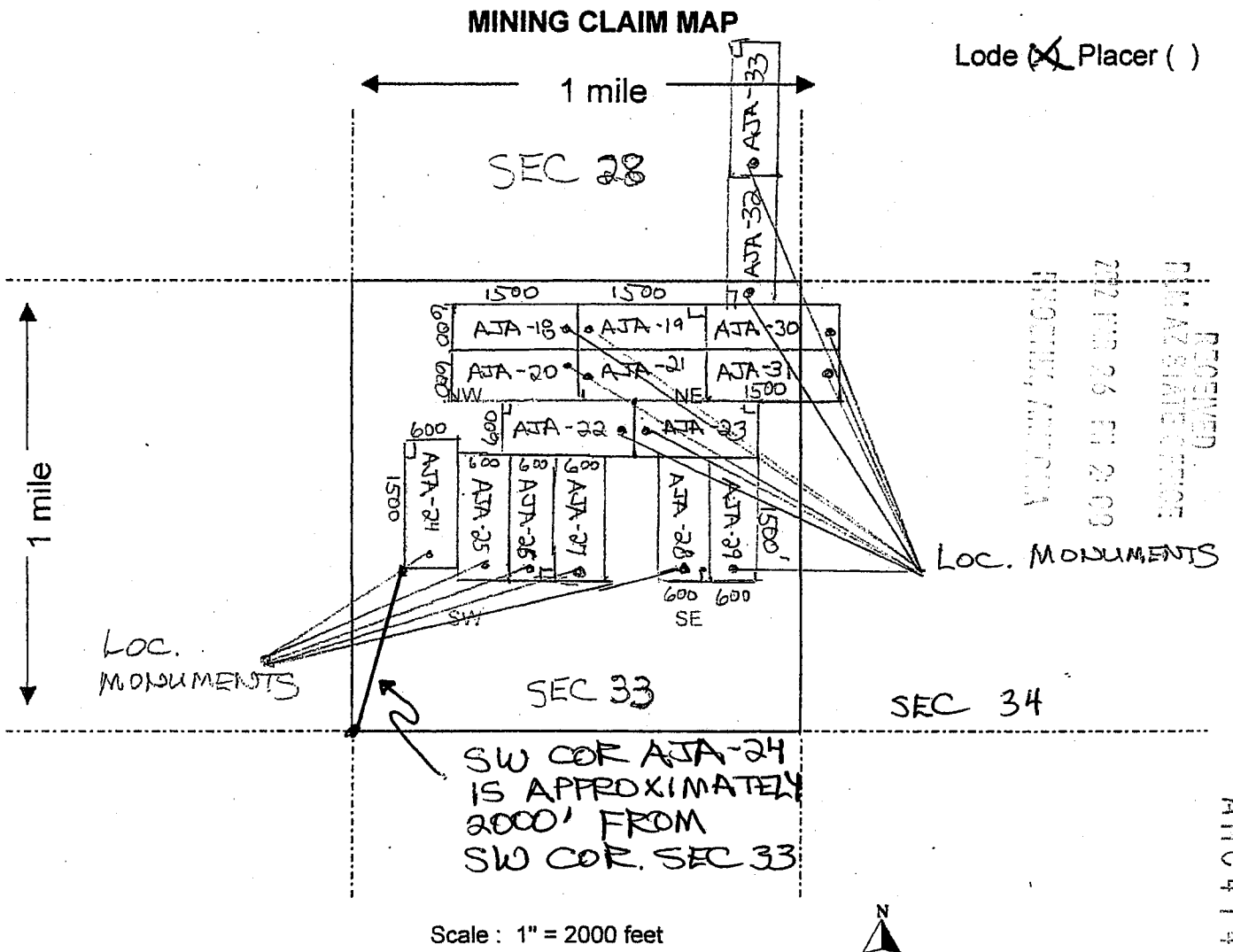
Gila Salt River Base and Meridian, Arizona.

The locality of this claim with reference to some natural object or permanent monument and additional information  
(if any) concerning its locality are as follows: SOUTH OF TUT PEAK  
(USGS MARKER)

DATED AND POSTED on the ground this 20th day of MARCH, 20 12

LOCATOR (s) Keith Jay  
KEITH JAY

Form MCF100  
Revised July 2005



- The above map depicts the AJA-20 mining claim, which is located in Section (s) 33, Township 30 N, Range 17 W, Gila and Salt River Base and Meridian, MOHAVE County, Arizona.
- The type of corner and location monuments used are as follows: 2" x 2" WOODEN POSTS 4 FEET HIGH
- The bearings and distances in degrees and feet between claim corners are as depicted on the map.

Form MCF100a  
Revised July 2005

2



FEE# 2012013860

OFFICIAL RECORDS  
OF MOHAVE COUNTY  
CAROL MEIER,  
COUNTY RECORDER



03/20/2012 11:14 AM Fee: \$10.00

PAGE: 1 of 2

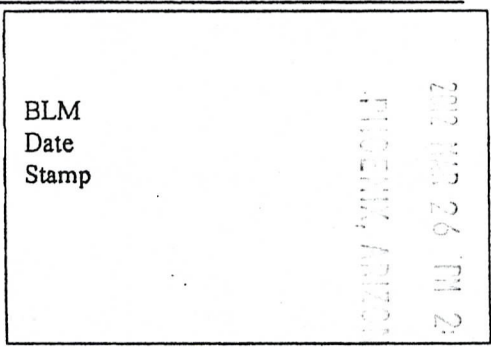
LOCATION NOTICE FOR LOPE MINING CLAIM

NOTICE IS HEREBY GIVEN that the AJA-21

\_\_\_\_\_ lode mining claim has been located

by AJA MINING LLC whose current mailing  
address is 10923 VALLEROSA ST.,  
LAS VEGAS, NV 89141

BLM  
Date  
Stamp



RECEIVED  
BLM AZ STATE OFFICE

The general course of this claim is EAST - WEST and it is situated in MOHAVE

County, Arizona. This claim is 1500 feet in length and 600 feet in width. This claim runs

from the location monument on which this location notice is posted approximately 20 feet in a

WEST direction to the WEST end line and 1480 feet in a EAST direction to the

EAST end line. This claim is marked by six monuments, one at each corner and one at the center of each  
end line of the claim.

The location monument on which this notice is posted is situated within Section 33, Township 30

N, Range 17 W, Gila Salt River Base and Meridian, Arizona and this claim encompasses portions

of the following quarter section (s), section (s), Township (s) and Range (s) NE 1/4 SEC 33,

T 30N, R 17W

Gila Salt River Base and Meridian, Arizona.

The locality of this claim with reference to some natural object or permanent monument and additional information

(if any) concerning its locality are as follows: SOUTH OF TUT PEAK

(USGS MARKER)

DATED AND POSTED on the ground this 20th day of MARCH, 20 12

LOCATOR (s) Keith Jay  
KEITH JAY

Form MCF100  
Revised July 2005

ANCH 14555



Lode ~~(X)~~ Placer ( )



1. The above map depicts the AJA-21 mining claim, which is located in Section (s) 33, Township 30 N, Range 17 W, Gila and Salt River Base and Meridian, MOHAVE County, Arizona.
2. The type of corner and location monuments used are as follows: 2" x 2" WOODEN POSTS 4 FEET HIGH
3. The bearings and distances in degrees and feet between claim corners are as depicted on the map.

**Form MCF100a**  
**Revised July 2005**

2

FEE# 2012013861

OFFICIAL RECORDS  
OF MOHAVE COUNTY  
CAROL MEIER,  
COUNTY RECORDER



03/20/2012 11:14 AM Fee: \$10.00

PAGE: 1 of 2

LOCATION NOTICE FOR LORE MINING CLAIM

NOTICE IS HEREBY GIVEN that the AJA - 22

lore mining claim has been located

by AJA MINING LLC whose current mailing  
address is 10923 VALLEROSA ST,  
LAS VEGAS, NV 89141

BLM  
Date  
Stamp

The general course of this claim is EAST-WEST and it is situated in MOHAVE  
County, Arizona. This claim is 1500 feet in length and 600 feet in width. This claim runs  
from the location monument on which this location notice is posted approximately 20 feet in a  
EAST direction to the EAST end line and 1480 feet in a WEST direction to the  
WEST end line. This claim is marked by six monuments, one at each corner and one at the center of each  
end line of the claim.

The location monument on which this notice is posted is situated within Section 33, Township 30  
N, Range 17 W, Gila Salt River Base and Meridian, Arizona and this claim encompasses portions  
of the following quarter section (s), section (s), Township (s) and Range (s) NE 1/4, NW 1/4 SEC 33,  
T30N, R 17W

Gila Salt River Base and Meridian, Arizona.

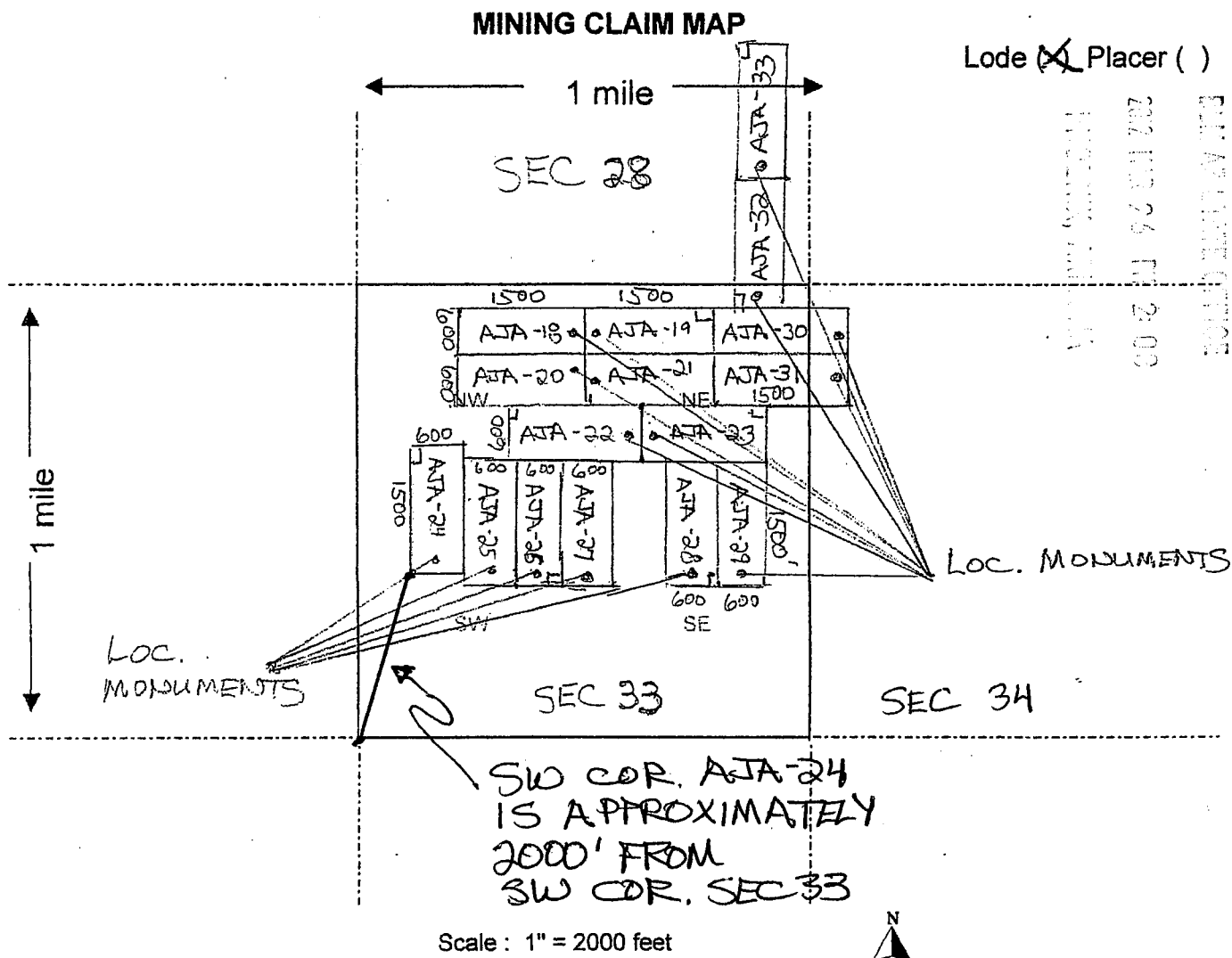
The locality of this claim with reference to some natural object or permanent monument and additional information  
(if any) concerning its locality are as follows: SOUTH OF TUT PEAK  
(USGS MARKER)

DATED AND POSTED on the ground this 20th day of MARCH, 20 12

LOCATOR (s)

Keith Jay  
KEITH JAY

Form MCF100  
Revised July 2005



- The above map depicts the AJA-22 mining claim, which is located in Section (s) 33, Township 30 N, Range 17 W, Gila and Salt River Base and Meridian, MOHAVE County, Arizona.
- The type of corner and location monuments used are as follows: 2" x 2" WOODEN POSTS 4 FEET HIGH
- The bearings and distances in degrees and feet between claim corners are as depicted on the map.

Form MCF100a  
Revised July 2005

AMC414556



2



LOCATION NOTICE FOR LODE MINING CLAIM

NOTICE IS HEREBY GIVEN that the AJA-23

\_\_\_\_\_ lode mining claim has been located

by AJA MINING LLC whose current mailing  
address is 10923 VALLEROSA ST.,  
LAS VEGAS, NV 89141.

BLM  
Date  
Stamp

The general course of this claim is EAST - WEST and it is situated in MOHAVE

County, Arizona. This claim is 1500 feet in length and 600 feet in width. This claim runs

from the location monument on which this location notice is posted approximately 20 feet in a

WEST direction to the WEST end line and 1480 feet in a EAST direction to the

EAST end line. This claim is marked by six monuments, one at each corner and one at the center of each  
end line of the claim.

The location monument on which this notice is posted is situated within Section 33, Township 30

N, Range 17 W, Gila Salt River Base and Meridian, Arizona and this claim encompasses portions

of the following quarter section (s), section (s), Township (s) and Range (s) NE 1/4 SEC 33,

T 30N, R 17W

Gila Salt River Base and Meridian, Arizona.

The locality of this claim with reference to some natural object or permanent monument and additional information

(if any) concerning its locality are as follows: SOUTH OF TUT PEAK

(USGS MARKER)

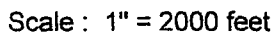
DATED AND POSTED on the ground this 20th day of MARCH, 20 12

LOCATOR (s) Keith Jay

KEITH JAY

Form MCF100  
Revised July 2005

Lode ~~( )~~ Placer ( )



2. The type of corner and location monuments used are as follows: 2" x 2" WOODEN POSTS 4 FEET HIGH

This form is available from the **Arizona Department of Mines & Mineral Resources** and may be reproduced.

2



LOCATION NOTICE FOR LODE MINING CLAIM

NOTICE IS HEREBY GIVEN that the ATA - 24

\_\_\_\_\_ lode mining claim has been located

by ATA MINING LLC whose current mailing  
address is 10923 VALLEROSA ST.,  
LAS VEGAS, NV 89141

BLM  
Date  
Stamp

The general course of this claim is NORTH-SOUTH and it is situated in MOHAVE  
County, Arizona. This claim is 1500 feet in length and 600 feet in width. This claim runs  
from the location monument on which this location notice is posted approximately 20 feet in a  
SOUTH direction to the SOUTH end line and 1480 feet in a NORTH direction to the  
NORTH end line. This claim is marked by six monuments, one at each corner and one at the center of each  
end line of the claim.

The location monument on which this notice is posted is situated within Section 33, Township 30  
N, Range 17 W, Gila Salt River Base and Meridian, Arizona and this claim encompasses portions  
of the following quarter section (s), section (s), Township (s) and Range (s) NW 1/4, SW 1/4 SEC 33,  
T 30 N, R 17 W

Gila Salt River Base and Meridian, Arizona.

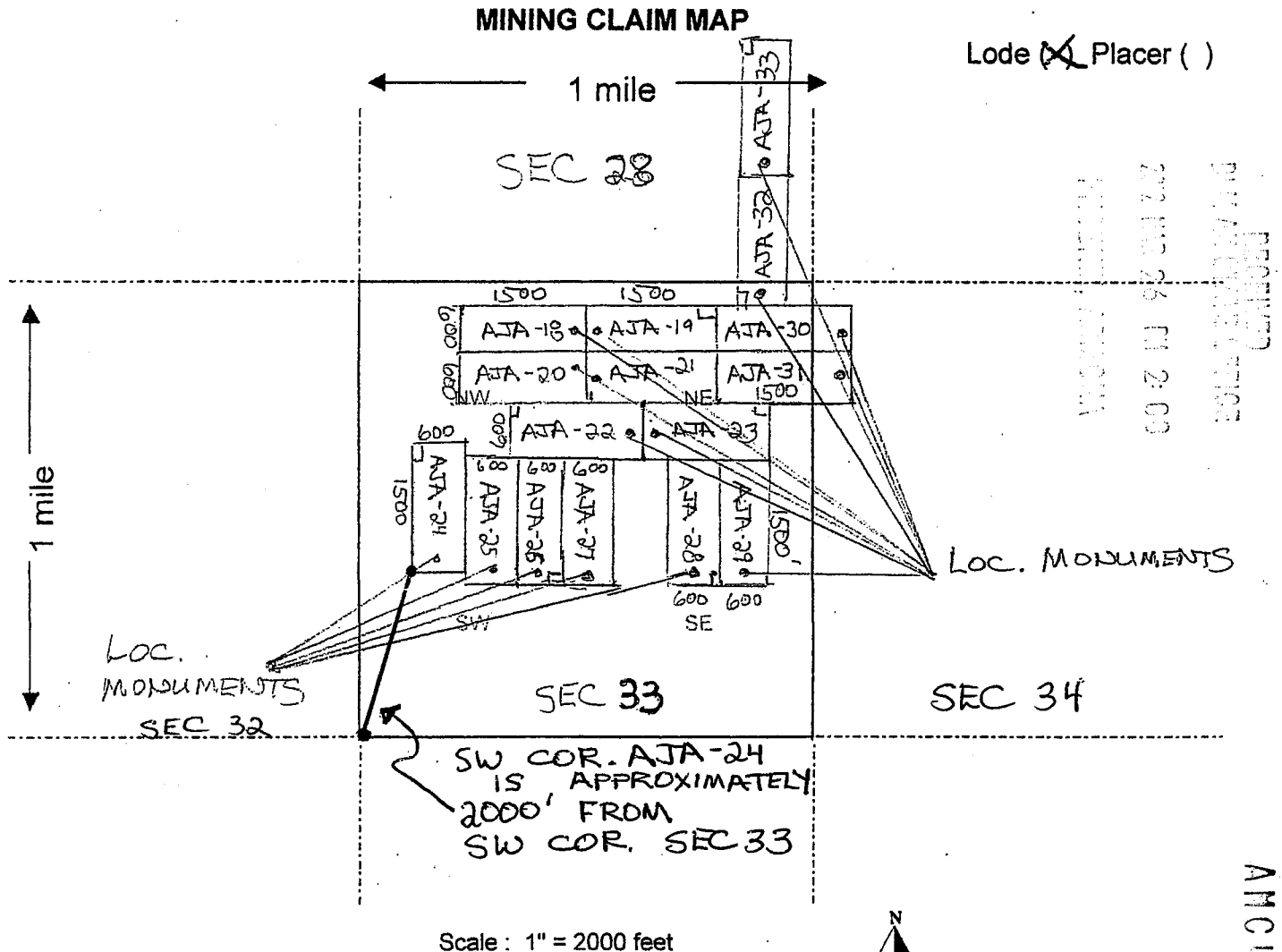
The locality of this claim with reference to some natural object or permanent monument and additional information  
(if any) concerning its locality are as follows: SOUTH OF TUT PEAK  
(USGS MARKER)

DATED AND POSTED on the ground this 20th day of MARCH, 20 12

LOCATOR (s) Keith Jay  
KEITH JAY

FILED  
MAR 23 11 20 AM  
2012  
ARCH 14 558





- The above map depicts the AJA-24 mining claim, which is located in Section (s) 33, Township 30 N, Range 17 W, Gila and Salt River Base and Meridian, MOHAVE County, Arizona.
- The type of corner and location monuments used are as follows: 2" x 2" WOODEN POSTS 4 FEET HIGH
- The bearings and distances in degrees and feet between claim corners are as depicted on the map.

Form MCF100a  
Revised July 2005

This form is available from the Arizona Department of Mines & Mineral Resources and may be reproduced.

AMC 414558

2

FEE# 2012013864

OFFICIAL RECORDS  
OF MOHAVE COUNTY  
CAROL MEIER  
COUNTY RECORDER



03/20/2012 11:14 AM Fee: \$10.00

PAGE: 1 of 2

LOCATION NOTICE FOR LODE MINING CLAIM

NOTICE IS HEREBY GIVEN that the AJA-25  
\_\_\_\_\_ lode mining claim has been located  
by AJA MINING LLC whose current mailing  
address is 10923 VALLEROSA ST.,  
LAS VEGAS, NV 89141

BLM  
Date  
Stamp

FILED  
MAR 20 2012  
MOHAVE COUNTY  
CLERK

The general course of this claim is NORTH-SOUTH and it is situated in MOHAVE  
County, Arizona. This claim is 1500 feet in length and 600 feet in width. This claim runs  
from the location monument on which this location notice is posted approximately 20 feet in a  
SOUTH direction to the SOUTH end line and 1480 feet in a NORTH direction to the  
NORTH end line. This claim is marked by six monuments, one at each corner and one at the center of each  
end line of the claim.

The location monument on which this notice is posted is situated within Section 33, Township 30  
N, Range 17 W, Gila Salt River Base and Meridian, Arizona and this claim encompasses portions  
of the following quarter section (s), section (s), Township (s) and Range (s) NW 1/4, SW 1/4 SEC 33  
T30N, R17W

Gila Salt River Base and Meridian, Arizona.

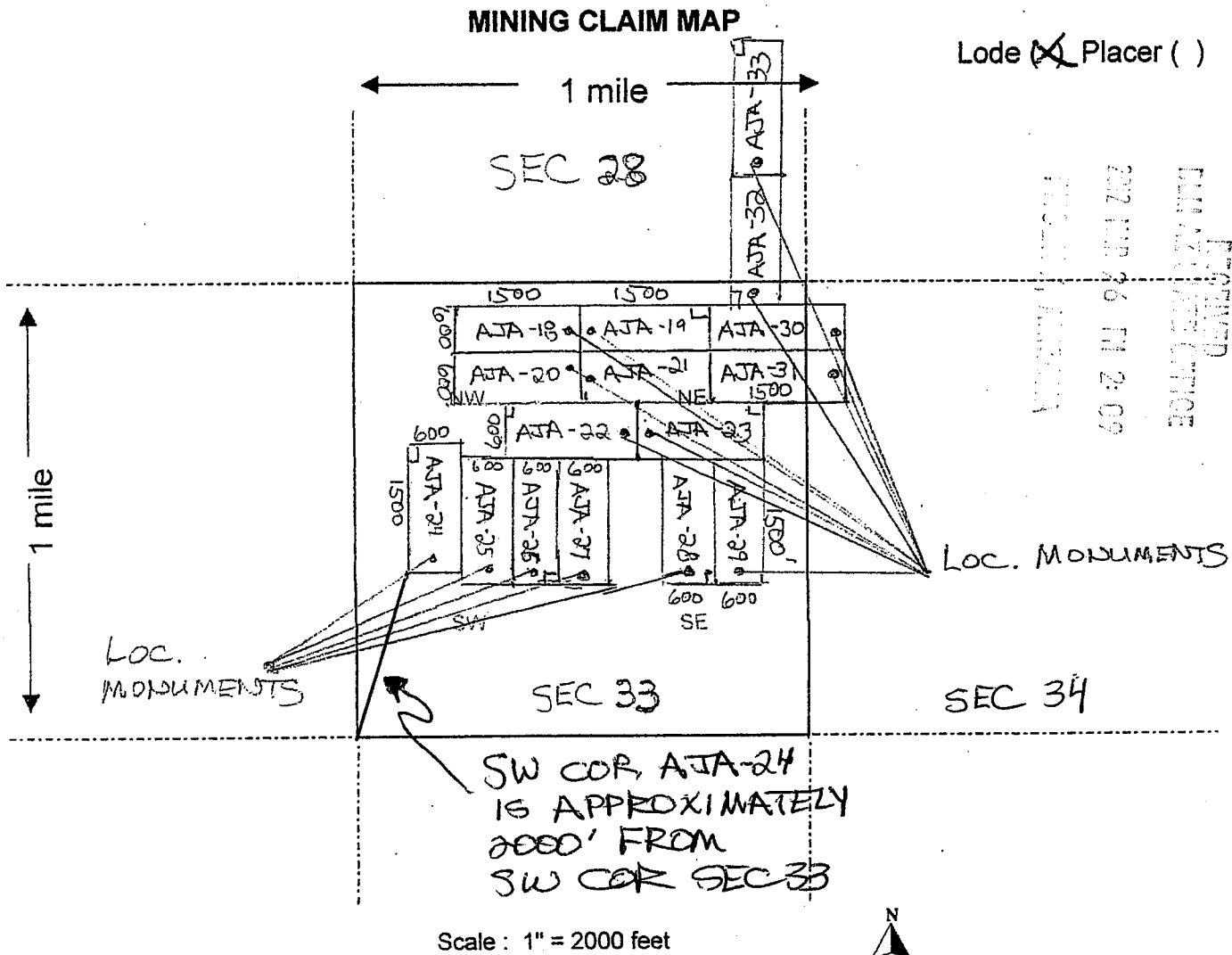
The locality of this claim with reference to some natural object or permanent monument and additional information  
(if any) concerning its locality are as follows: SOUTH OF TUT PEAK  
(USGS MARKER)

DATED AND POSTED on the ground this 20th day of MARCH, 20 12

LOCATOR (s) Keith Jay  
KEITH JAY

Form MCF100  
Revised July 2005

AMC 414559



- The above map depicts the AJA-25 mining claim, which is located in Section (s) 33, Township 30 N, Range 17 W, Gila and Salt River Base and Meridian, MOHAVE County, Arizona.
- The type of corner and location monuments used are as follows: 2" x 2" WOODEN POSTS 4 FEET HIGH
- The bearings and distances in degrees and feet between claim corners are as depicted on the map.

Form MCF100a  
Revised July 2005

This form is available from the Arizona Department of Mines & Mineral Resources and may be reproduced.

AMC414559



2



FEE# 2012013865

OFFICIAL RECORDS  
OF MOHAVE COUNTY  
CAROL MEIER,  
COUNTY RECORDER



03/20/2012 11:14 AM Fee: \$10.00

PAGE: 1 of 2

LOCATION NOTICE FOR LODE MINING CLAIM

NOTICE IS HEREBY GIVEN that the AJA-26

\_\_\_\_\_ lode mining claim has been located

by AJA MINING LLC whose current mailing

address is 10923 VALLEROSA ST.,

LAS VEGAS, NV 89141

The general course of this claim is NORTH-SOUTH and it is situated in MOHAVE

County, Arizona. This claim is 1500 feet in length and 600 feet in width. This claim runs

from the location monument on which this location notice is posted approximately 20 feet in a

SOUTH direction to the SOUTH end line and 1480 feet in a NORTH direction to the

NORTH end line. This claim is marked by six monuments, one at each corner and one at the center of each end line of the claim.

The location monument on which this notice is posted is situated within Section 33, Township 30

N, Range 17 W, Gila Salt River Base and Meridian, Arizona and this claim encompasses portions

of the following quarter section (s), section (s), Township (s) and Range (s) NW 1/4, SW 1/4 SEC 33,

T 30 N, R 17 W

Gila Salt River Base and Meridian, Arizona.

The locality of this claim with reference to some natural object or permanent monument and additional information

(if any) concerning its locality are as follows: SOUTH OF TUT PEAK

(USGS MARKER)

DATED AND POSTED on the ground this 20th day of MARCH, 20 12

LOCATOR (s) Keith Jay

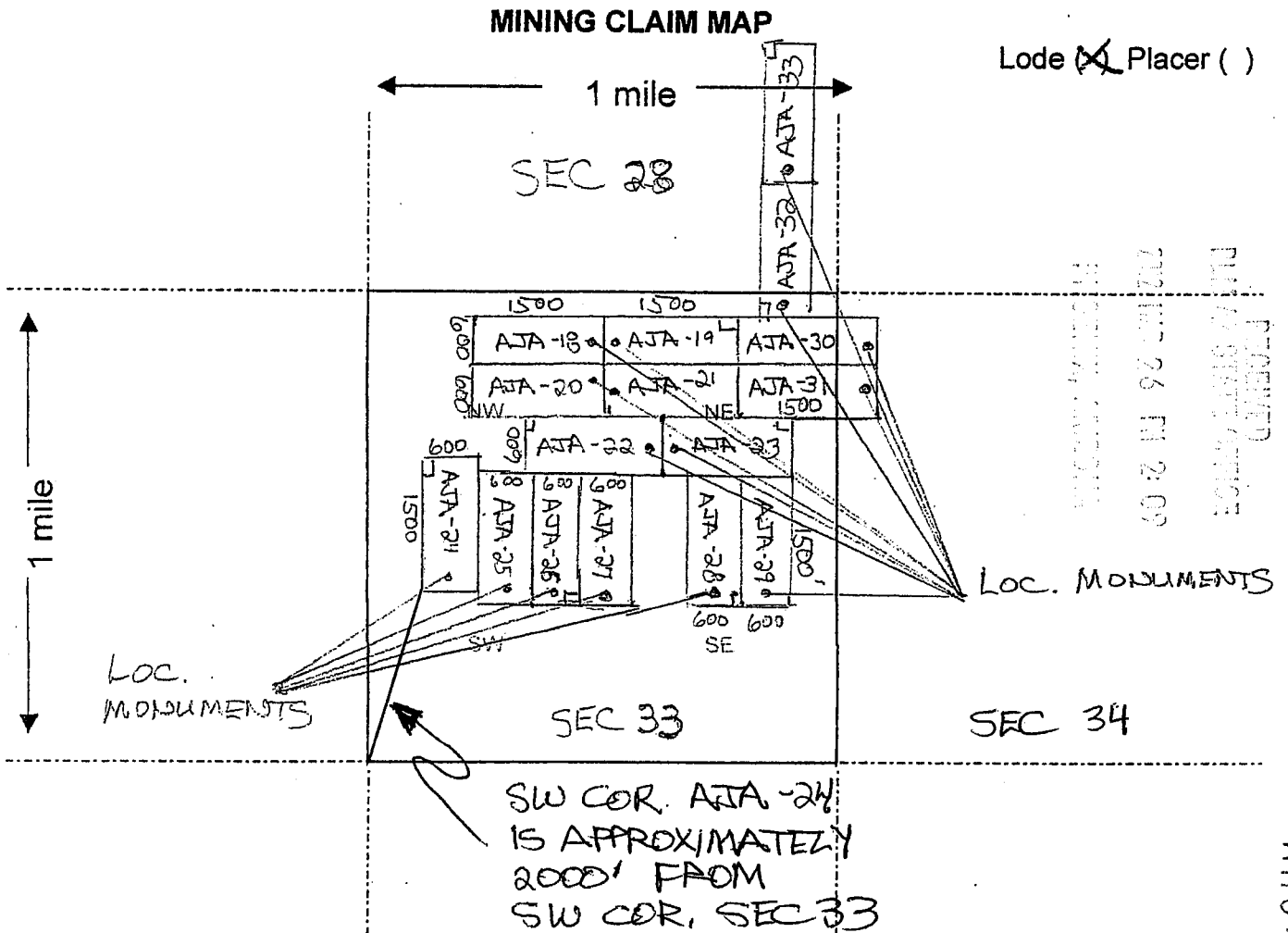
KEITH JAY

Form MCF100  
Revised July 2005

BLM  
Date  
Stamp

RECEIVED  
MILITARY OFFICE  
2012 MAR 26 PM 2:09  
HISBURY, ARIZONA

AMC414560



- The above map depicts the AJA-26 mining claim, which is located in Section (s) 33, Township 30 N, Range 17 W, Gila and Salt River Base and Meridian, MOHAVE County, Arizona.
- The type of corner and location monuments used are as follows: 2" x 2" WOODEN POSTS 4 FEET HIGH
- The bearings and distances in degrees and feet between claim corners are as depicted on the map.

Form MCF100a  
Revised July 2005

This form is available from the Arizona Department of Mines & Mineral Resources and may be reproduced.

AMC414560

2



FEE# 2012013866

OFFICIAL RECORDS  
OF MOHAVE COUNTY  
CAROL MEIER,  
COUNTY RECORDER



03/20/2012 11:14 AM Fee: \$10.00

PAGE: 1 of 2

LOCATION NOTICE FOR LODE MINING CLAIM

NOTICE IS HEREBY GIVEN that the AJA - 27

\_\_\_\_\_ lode mining claim has been located

by AJA MINING LLC whose current mailing  
address is 10923 VALLEROSA ST.,  
LAS VEGAS, NV 89141

BLM  
Date  
Stamp

RECEIVED  
COUNTY CLERK'S OFFICE  
2012 MAR 26 PM 2:09  
MOHAVE COUNTY, ARIZONA

The general course of this claim is NORTH-SOUTH and it is situated in MOHAVE  
County, Arizona. This claim is 1500 feet in length and 600 feet in width. This claim runs  
from the location monument on which this location notice is posted approximately 20 feet in a  
SOUTH direction to the SOUTH end line and 1480 feet in a NORTH direction to the  
NORTH end line. This claim is marked by six monuments, one at each corner and one at the center of each  
end line of the claim.

The location monument on which this notice is posted is situated within Section 33, Township 30  
N, Range 17 W, Gila Salt River Base and Meridian, Arizona and this claim encompasses portions  
of the following quarter section (s), section (s), Township (s) and Range (s) NE 1/4, SE 1/4 SEC 33,  
T30N, R17W

Gila Salt River Base and Meridian, Arizona.

The locality of this claim with reference to some natural object or permanent monument and additional information  
(if any) concerning its locality are as follows: SOUTH OF TUT PEAK  
(USGS MARKER)

DATED AND POSTED on the ground this 20th day of MARCH, 20 12

LOCATOR (s) Keith Jay  
KEITH JAY

Form MCF100  
Revised July 2005



Lode ~~(X)~~ Placer ( )



1. The above map depicts the AJA-27 mining claim, which is located in Section (s) 33, Township 30 N, Range 17 W, Gila and Salt River Base and Meridian, MOHAVE County, Arizona.
2. The type of corner and location monuments used are as follows: 2" x 2" WOODEN POSTS 4 FEET HIGH.
3. The bearings and distances in degrees and feet between claim corners are as depicted on the map.

Form MCF100a  
Revised July 2005

2

FEE# 2012013867

OFFICIAL RECORDS  
OF MOHAVE COUNTY  
CAROL MEIER,  
COUNTY RECORDER



03/20/2012 11:14 AM Fee: \$10.00

PAGE: 1 of 2

LOCATION NOTICE FOR LODE MINING CLAIM

NOTICE IS HEREBY GIVEN that the AJA-28

\_\_\_\_\_ lode mining claim has been located

by AJA MINING LLC whose current mailing  
address is 10923 VALLEROSA ST.,  
LAS VEGAS, NV 89141

BLM  
Date  
Stamp

2012 MAR 26 PM 2:09  
RECEIVED  
BLM AZ REC'D OFFICE

The general course of this claim is NORTH-SOUTH and it is situated in MOHAVE  
County, Arizona. This claim is 1500 feet in length and 600 feet in width. This claim runs  
from the location monument on which this location notice is posted approximately 20 feet in a  
SOUTH direction to the SOUTH end line and 1480 feet in a NORTH direction to the  
NORTH end line. This claim is marked by six monuments, one at each corner and one at the center of each  
end line of the claim.

The location monument on which this notice is posted is situated within Section 33, Township 30  
N, Range 17 W, Gila Salt River Base and Meridian, Arizona and this claim encompasses portions  
of the following quarter section (s), section (s), Township (s) and Range (s) NE 1/4, SE 1/4 SEC 33,  
T 30 N, R 17 W

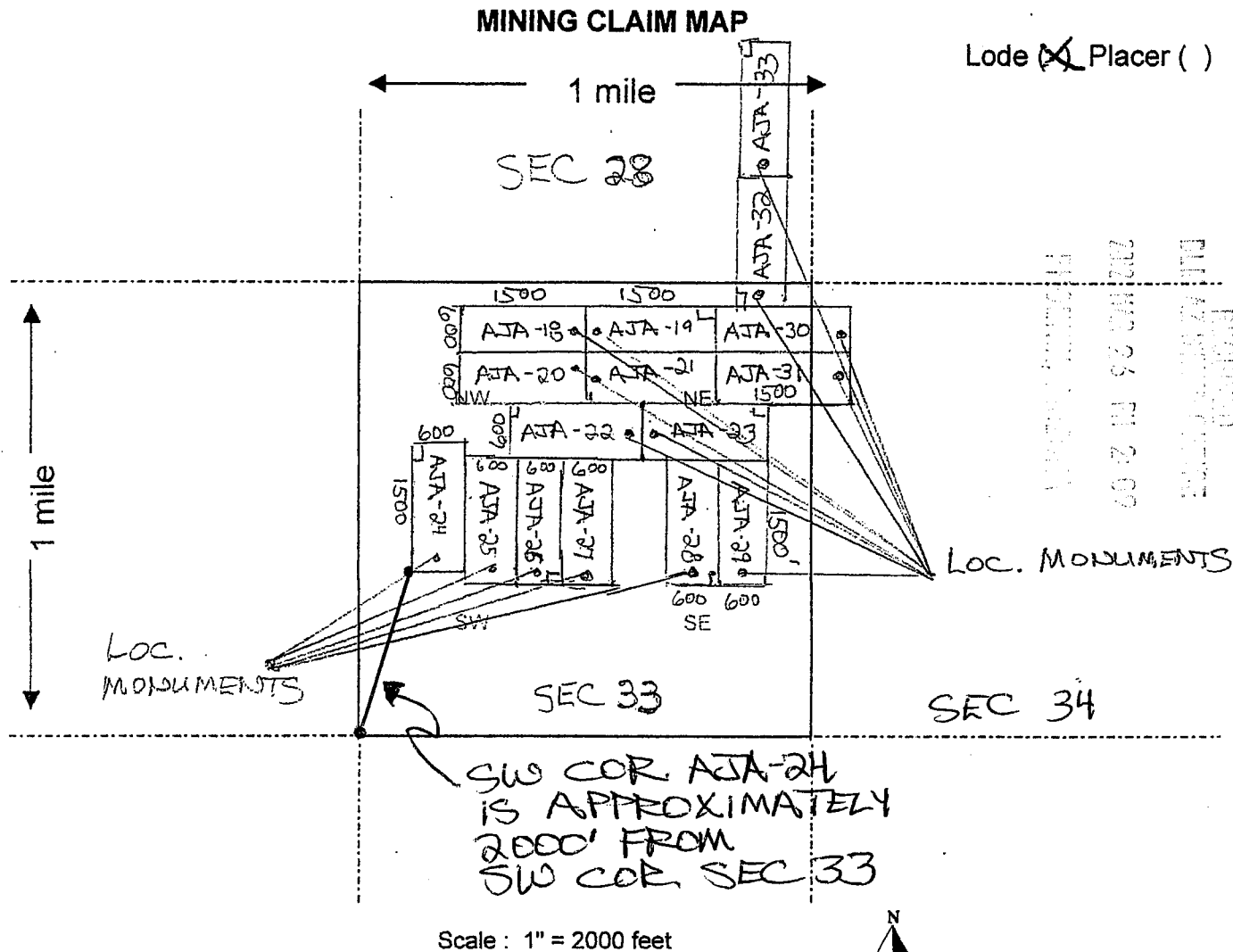
Gila Salt River Base and Meridian, Arizona.

The locality of this claim with reference to some natural object or permanent monument and additional information  
(if any) concerning its locality are as follows: SOUTH OF TUT PEAK  
(USGS MARKER)

DATED AND POSTED on the ground this 20th day of MARCH, 20 12

LOCATOR (s) Keith Jay  
KEITH JAY

Form MCF100  
Revised July 2005



- The above map depicts the AJA-28 mining claim, which is located in Section (s) 33, Township 30 N, Range 17 W, Gila and Salt River Base and Meridian, MOHAVE County, Arizona.
- The type of corner and location monuments used are as follows: 2" x 2" WOODEN POSTS 4 FEET HIGH
- The bearings and distances in degrees and feet between claim corners are as depicted on the map.

Form MCF100a  
Revised July 2005

This form is available from the Arizona Department of Mines & Mineral Resources and may be reproduced.

AMC414562



2

FEE# 2012013868

OFFICIAL RECORDS  
OF MOHAVE COUNTY  
CAROL MEIER,  
COUNTY RECORDER



03/20/2012 11:14 AM Fee: \$10.00

PAGE: 1 of 2

LOCATION NOTICE FOR LODE MINING CLAIM

NOTICE IS HEREBY GIVEN that the AJA-29

\_\_\_\_\_ lode mining claim has been located

by AJA MINING LLC whose current mailing  
address is 10923 VALLEROSA ST.,  
LAS VEGAS, NV 89141

BLM  
Date  
Stamp

2012 MAR 26 PM 2:09

RECEIVED  
MILITARY OFFICE

The general course of this claim is NORTH-SOUTH and it is situated in MOHAVE  
County, Arizona. This claim is 1500 feet in length and 600 feet in width. This claim runs  
from the location monument on which this location notice is posted approximately 20 feet in a  
SOUTH direction to the SOUTH end line and 1480 feet in a NORTH direction to the  
NORTH end line. This claim is marked by six monuments, one at each corner and one at the center of each  
end line of the claim.

The location monument on which this notice is posted is situated within Section 33, Township 30  
N, Range 17 W, Gila Salt River Base and Meridian, Arizona and this claim encompasses portions  
of the following quarter section (s), section (s), Township (s) and Range (s) NE 1/4, SE 1/4 SEC 33,  
T30N, R17W

Gila Salt River Base and Meridian, Arizona.

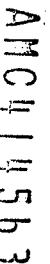
The locality of this claim with reference to some natural object or permanent monument and additional information  
(if any) concerning its locality are as follows: SOUTH OF TUT PEAK  
(USGS MARKER)

DATED AND POSTED on the ground this 20th day of MARCH, 20 12

LOCATOR (s) Keith Jay  
KEITH JAY

Form MCF100  
Revised July 2005

Lode ~~(X)~~ Placer ( )



- Form MCF100a  
Revised July 2005

FEE# 2012013869

OFFICIAL RECORDS  
OF MOHAVE COUNTY  
CAROL MEIER,  
COUNTY RECORDER



03/20/2012 11:14 AM Fee: \$10.00

PAGE: 1 of 2

LOCATION NOTICE FOR LODE MINING CLAIM

NOTICE IS HEREBY GIVEN that the AJA - 30

\_\_\_\_\_ lode mining claim has been located

by AJA MINING LLC whose current mailing  
address is 10923 VALLEROSA ST,  
LAS VEGAS 89141

BLM  
Date  
Stamp

The general course of this claim is EAST-WEST and it is situated in MOHAVE  
County, Arizona. This claim is 1500 feet in length and 600 feet in width. This claim runs  
from the location monument on which this location notice is posted approximately 20 feet in a  
EAST direction to the EAST end line and 1480 feet in a WEST direction to the  
WEST end line. This claim is marked by six monuments, one at each corner and one at the center of each  
end line of the claim.

The location monument on which this notice is posted is situated within Section 34, Township 30  
N, Range 17 W, Gila Salt River Base and Meridian, Arizona and this claim encompasses portions  
of the following quarter section (s), section (s), Township (s) and Range (s) NE 1/4 SEC 33, NW 1/4 SEC 34,  
T30N, R 17W

Gila Salt River Base and Meridian, Arizona.

The locality of this claim with reference to some natural object or permanent monument and additional information  
(if any) concerning its locality are as follows: SOUTH OF TUT PEAK  
(USGS MARKER)

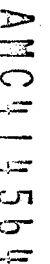
DATED AND POSTED on the ground this 20th day of MARCH, 20 12

LOCATOR (s) Keith Jay  
KEITH JAY

Form MCF100  
Revised July 2005



Lode ~~(X)~~ Placer ( )



- Form MCF100a  
Revised July 2005

2

FEE# 2012013870

OFFICIAL RECORDS  
OF MOHAVE COUNTY  
CAROL MEIER,  
COUNTY RECORDER



03/20/2012 11:14 AM Fee: \$10.00

PAGE: 1 of 2

LOCATION NOTICE FOR LODE MINING CLAIM

NOTICE IS HEREBY GIVEN that the AJA-31

\_\_\_\_\_ lode mining claim has been located

by AJA MINING LLC whose current mailing  
address is 10923 VALLEROSA ST,  
LAS VEGAS 89141

BLM  
Date  
Stamp

RECEIVED  
BLM REC'D OFFICE  
2012 MAR 26 PM 2:10  
MILWAUKEE, WISCONSIN

The general course of this claim is EAST-WEST and it is situated in MOHAVE  
County, Arizona. This claim is 1500 feet in length and 600 feet in width. This claim runs  
from the location monument on which this location notice is posted approximately 20 feet in a  
EAST direction to the EAST end line and 1480 feet in a WEST direction to the  
WEST end line. This claim is marked by six monuments, one at each corner and one at the center of each  
end line of the claim.

The location monument on which this notice is posted is situated within Section 34, Township 30  
N, Range 17 W, Gila Salt River Base and Meridian, Arizona and this claim encompasses portions  
of the following quarter section (s), section (s), Township (s) and Range (s) NE 1/4 SEC 33, NW 1/4 SEC 34,  
T 30 N, R 17 W

Gila Salt River Base and Meridian, Arizona.

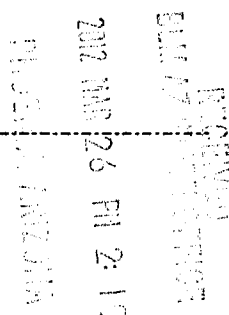
The locality of this claim with reference to some natural object or permanent monument and additional information  
(if any) concerning its locality are as follows: SOUTH OF TUT PEAK  
(USGS MARKER)

DATED AND POSTED on the ground this 20th day of MARCH, 20 12

LOCATOR (s) KETH JAY  
KETH JAY

Form MCF100  
Revised July 2005

Lode ~~(X)~~ Placer ( )



1. The above map depicts the AJA - 31 mining claim, which is located in Section (s) 34, Township 30 N, Range 17 W, Gila and Salt River Base and Meridian, MOHAVE County, Arizona.
2. The type of corner and location monuments used are as follows: 2" x 2" WOODEN POSTS 4 FEET HIGH
3. The bearings and distances in degrees and feet between claim corners are as depicted on the map.

Form MCF100a  
Revised July 2005

AMC 1565





FEE# 2012013871

OFFICIAL RECORDS  
OF MOHAVE COUNTY  
CAROL MEIER,  
COUNTY RECORDER



03/20/2012 11:14 AM Fee: \$10.00

PAGE: 1 of 2

LOCATION NOTICE FOR LODE MINING CLAIM

NOTICE IS HEREBY GIVEN that the AJA-32  
\_\_\_\_\_ lode mining claim has been located  
by AJA MINING LLC whose current mailing  
address is 10923 VALLEROSA ST.,  
LAS VEGAS, NV 89141

BLM  
Date  
Stamp

2012 MAR 26 PM 2:10  
TUCSON, ARIZONA

The general course of this claim is NORTH-SOUTH and it is situated in MOHAVE  
County, Arizona. This claim is 1500 feet in length and 600 feet in width. This claim runs  
from the location monument on which this location notice is posted approximately 20 feet in a  
SOUTH direction to the SOUTH end line and 1480 feet in a NORTH direction to the  
NORTH end line. This claim is marked by six monuments, one at each corner and one at the center of each  
end line of the claim.

The location monument on which this notice is posted is situated within Section 33, Township 30  
N, Range 17 W, Gila Salt River Base and Meridian, Arizona and this claim encompasses portions  
of the following quarter section (s), section (s), Township (s) and Range (s) NE 1/4 SEC 33, SE 1/4 SEC 28,  
T30N, R17W

Gila Salt River Base and Meridian, Arizona.

The locality of this claim with reference to some natural object or permanent monument and additional information  
(if any) concerning its locality are as follows: EAST OF TUT PEAK  
(USGS MARKER)

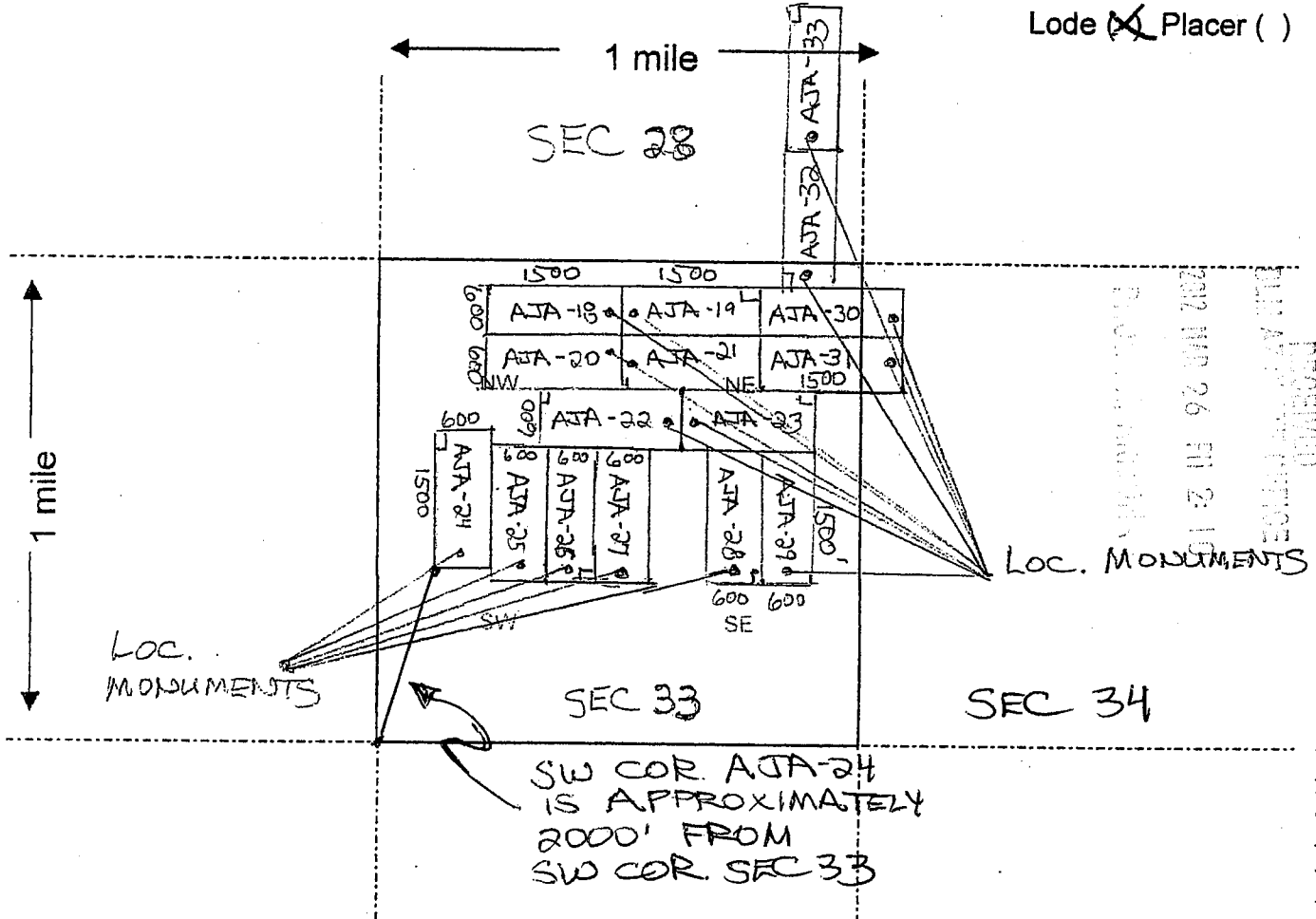
DATED AND POSTED on the ground this 20th day of MARCH, 2012

LOCATOR (s) Keith Jay  
KEITH JAY

Form MCF100  
Revised July 2005

# MINING CLAIM MAP

Lode ☒ Placer ( )



Scale : 1" = 2000 feet



- The above map depicts the AJA-32 mining claim, which is located in Section (s) 33, Township 30 N, Range 17 W, Gila and Salt River Base and Meridian, MOHAVE County, Arizona.
- The type of corner and location monuments used are as follows: 2" x 2" WOODEN POSTS 4 FEET HIGH
- The bearings and distances in degrees and feet between claim corners are as depicted on the map.

Form MCF100a  
Revised July 2005

This form is available from the Arizona Department of Mines & Mineral Resources and may be reproduced.



FEE# 2012013872

OFFICIAL RECORDS  
OF MOHAVE COUNTY  
CAROL MEIER,  
COUNTY RECORDER

03/20/2012 11:14 AM Fee: \$10.00

PAGE: 1 of 2

## LOCATION NOTICE FOR LODE MINING CLAIM

NOTICE IS HEREBY GIVEN that the AJA - 33

\_\_\_\_\_ lode mining claim has been located

by AJA MINING LLC whose current mailingaddress is 10923 VALLEROSA ST.,LAS VEGAS, NV 89141BLM  
Date  
Stamp2012 MAR 26 PM 2:10  
MOHAVE COUNTY  
RECORDER'S OFFICEThe general course of this claim is NORTH - SOUTH and it is situated in MOHAVECounty, Arizona. This claim is 1500 feet in length and 600 feet in width. This claim runsfrom the location monument on which this location notice is posted approximately 20 feet in aSOUTH direction to the SOUTH end line and 1480 feet in a NORTH direction to theNORTH end line. This claim is marked by six monuments, one at each corner and one at the center of each end line of the claim.The location monument on which this notice is posted is situated within Section 28, Township 30N, Range 17 W, Gila Salt River Base and Meridian, Arizona and this claim encompasses portionsof the following quarter section (s), section (s), Township (s) and Range (s) SE 1/4 SEC 28,T 30 N, R 17 W, NE 1/4 SEC 28, T 30 N, R 17 W

Gila Salt River Base and Meridian, Arizona.

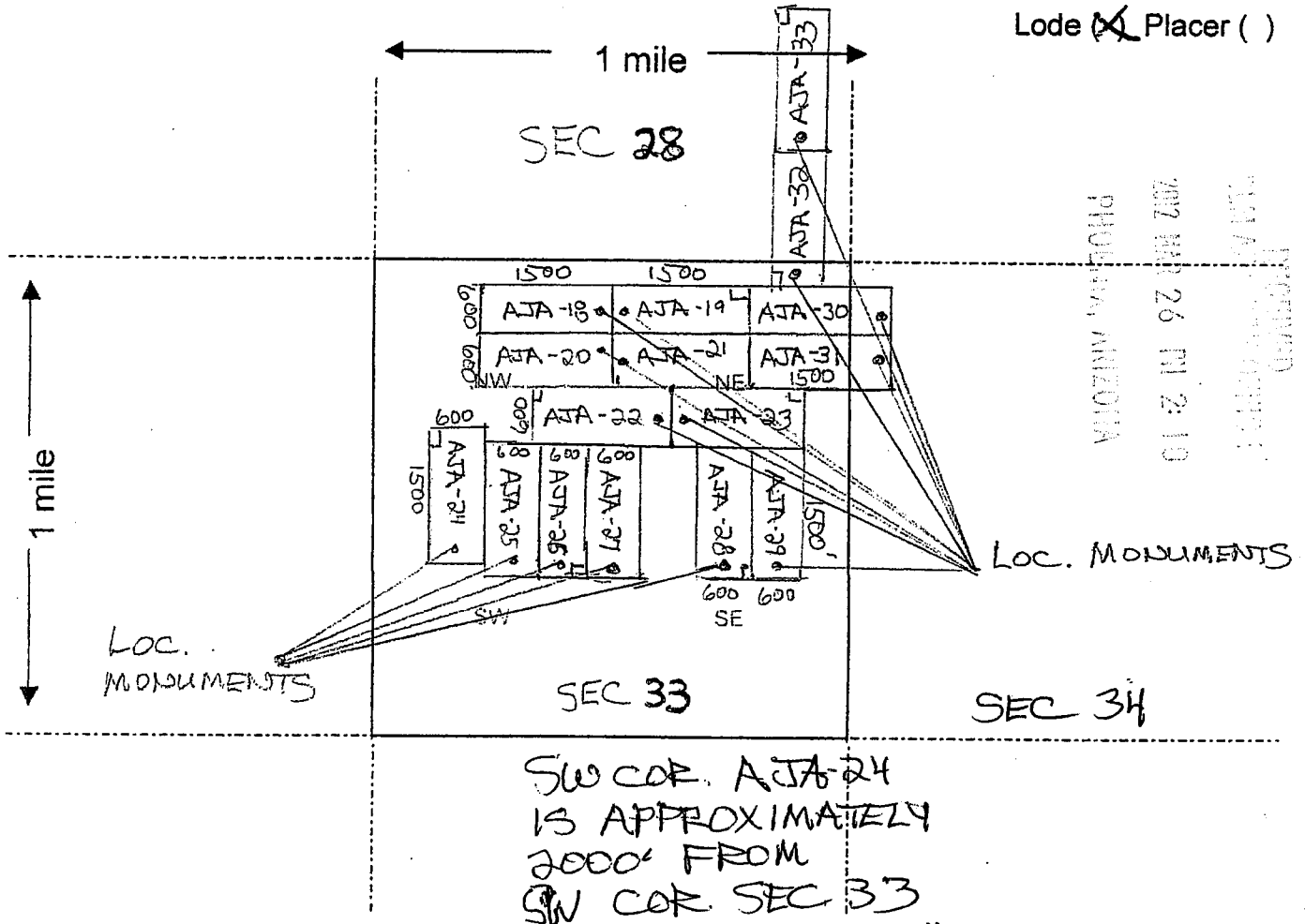
The locality of this claim with reference to some natural object or permanent monument and additional information

(if any) concerning its locality are as follows: EAST OF TUT PEAK(USGS MARKER)DATED AND POSTED on the ground this 20th day of MARCH, 2012LOCATOR (s) Keith JayKEITH JAYForm MCF100  
Revised July 2005

AMC414567



# MINING CLAIM MAP



Scale: 1" = 2000 feet

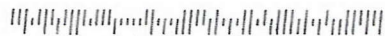
1. The above map depicts the AJA-33 mining claim, which is located in Section (s) 28, Township 30 N, Range 17 W, Gila and Salt River Base and Meridian, MOHAVE County, Arizona.
2. The type of corner and location monuments used are as follows: 2" x 2" WOODEN POSTS 4 FEET HIGH
3. The bearings and distances in degrees and feet between claim corners are as depicted on the map.

Form MCF100a  
Revised July 2005

This form is available from the Arizona Department of Mines & Mineral Resources and may be reproduced.

AMC414567

AJA Mining LLC  
10923 VALLEROSA STREET  
LAS VEGAS, NV 89141



1000



85004

U.S. POSTAGE  
PAID  
LAS VEGAS, NV  
89123  
MAR 23, 12  
AMOUNT

**\$1.90**

00055022-12

Bureau of Land Management  
One North Central Ave.  
Suite 800  
Phoenix, AZ 85004-4427

BLM AZ  
RECEIVED  
OFFICE  
2012 MAR 26 PM 2:07

RUN TIME: 12:38 PM

DEPARTMENT OF INTERIOR  
BUREAU OF LAND MANAGEMENT

RUN DATE: 03/30/2012  
Page 1 of 1

Input Parameters for Geographic Report with Land

System Id = CR

Admin State = AZ

Geo State = AZ

Casetype Begins With

Case Disp Txt = AUTHORIZED, CANCELLED, EXPIRED, PENDING, REJECTED, RELINQUISHED, WITHDRAWN

Mer Twp Rng =

Section =

Mtrs = 14 0300N 0170W 028, 14 0300N 0170W 033, 14 0300N 0170W 034, 14 0300N 0170W 999

Commodity =

Commodity Txt =

Pending Org =

Pend Org Decode =

Total Rows Returned: 6

NO WARRANTY IS MADE BY BLM FOR USE OF THE DATA  
FOR PURPOSES NOT INTENDED BY BLM



RUN TIME: 12:38 PM

Adm State: AZ

UNITED STATES DEPARTMENT OF INTERIOR  
BUREAU OF LAND MANAGEMENT  
GEOGRAPHIC REPORT WITH LAND  
Sorted by Meridian Township Range

RUN DATE: 03/30/2012

Page 1 of 2

Serial Number: AZA 017637

Total Case Acres: 48.790

<u>Casetype</u>	<u>Case Disp</u>	14	0300N	0170W	<u>Sect</u>	<u>Sur Typ</u>	<u>Sur Num</u>	<u>Suff</u>	<u>Subdivision</u>	<u>Act Pend</u>
281001	AUTHORIZED				034	ALIQ			E2;	

Serial Number: AZA 017637B

Total Case Acres: 48.790

<u>Casetype</u>	<u>Case Disp</u>	14	0300N	0170W	<u>Sect</u>	<u>Sur Typ</u>	<u>Sur Num</u>	<u>Suff</u>	<u>Subdivision</u>	<u>Act Pend</u>
282201	AUTHORIZED				034	ALIQ			E2;	

Serial Number: AZA 022277

Total Case Acres: 17.910

<u>Casetype</u>	<u>Case Disp</u>	14	0300N	0170W	<u>Sect</u>	<u>Sur Typ</u>	<u>Sur Num</u>	<u>Suff</u>	<u>Subdivision</u>	<u>Act Pend</u>
286203	AUTHORIZED				034	MNR MNR			NENWNE,W2NENE,W2SENE; NWNESE,E2E2SE;	

Serial Number: AZA 027150

Total Case Acres: 1.000

<u>Casetype</u>	<u>Case Disp</u>	14	0300N	0170W	<u>Sect</u>	<u>Sur Typ</u>	<u>Sur Num</u>	<u>Suff</u>	<u>Subdivision</u>	<u>Act Pend</u>
380913	EXPIRED				033	FF		1	PART;	

Serial Number: AZA 028153

Total Case Acres: 0.860

<u>Casetype</u>	<u>Case Disp</u>	14	0300N	0170W	<u>Sect</u>	<u>Sur Typ</u>	<u>Sur Num</u>	<u>Suff</u>	<u>Subdivision</u>	<u>Act Pend</u>
286001	AUTHORIZED				028	MNR		1	N2NENE;	

**RUN TIME: 12:38 PM**

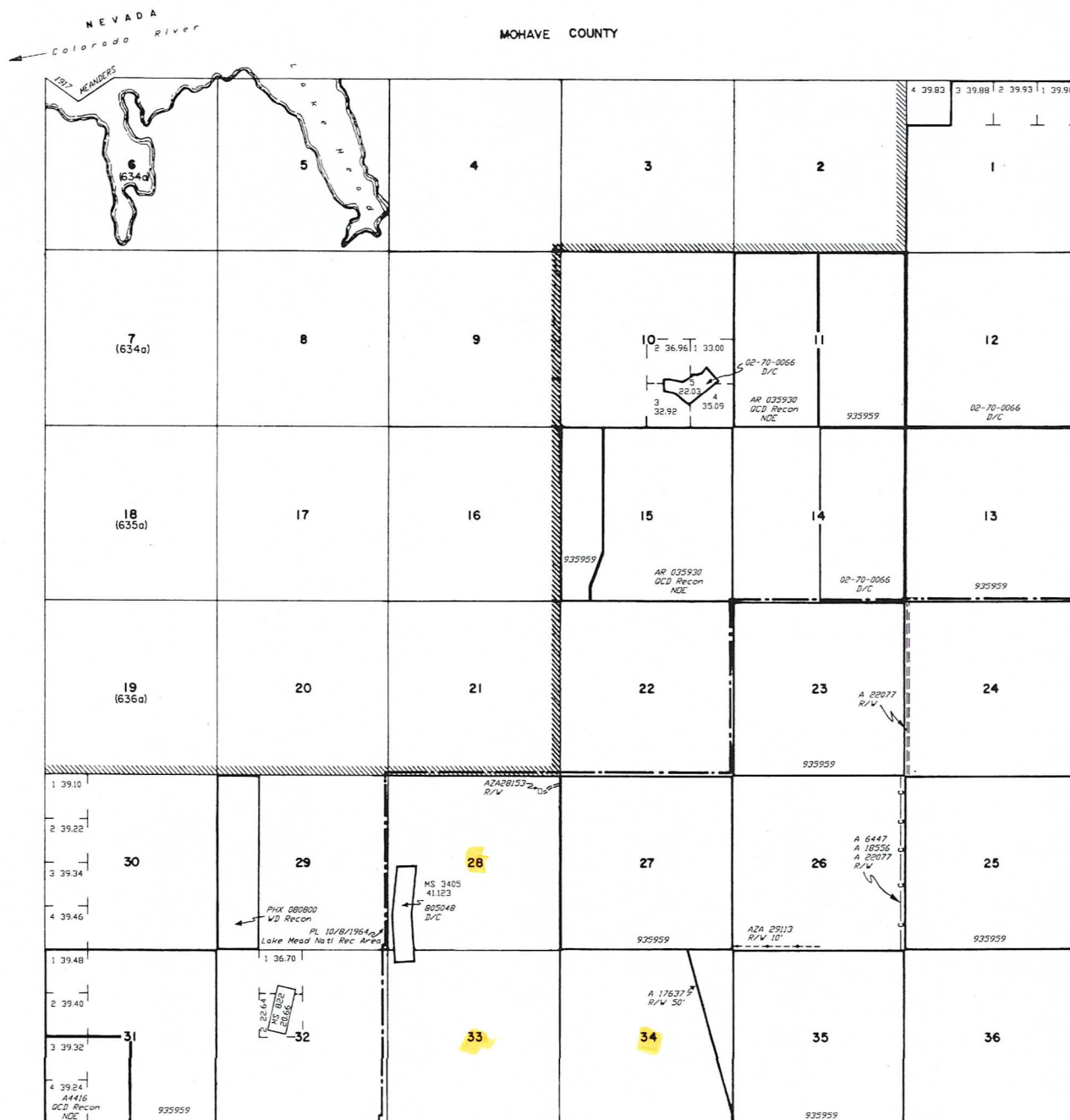
**Adm State: AZ**

**UNITED STATES DEPARTMENT OF INTERIOR  
BUREAU OF LAND MANAGEMENT  
GEOGRAPHIC REPORT WITH LAND  
Sorted by Meridian Township Range**

**RUN DATE: 03/30/2012  
Page 2 of 2**

STATUS OF PUBLIC DOMAIN  
LAND AND MINERAL TITLES

MOHAVE COUNTY



Lat. 35°56'39"N  
Long. 114°02'18"W

[illegible]

FOR ORDERS EFFECTING DISPOSAL OR USE OF  
UNIDENTIFIED LANDS WITHDRAWN FOR CLASSIFICATION,  
MINERALS, WATER AND/OR OTHER PUBLIC PURPOSES,  
REFER TO INDEX OF MISCELLANEOUS DOCUMENTS.

All lands within 6 miles of Colo. River W of 114th Mer.  
included in Temp. Wd. Colo. River sur. SD 1/31/1903

All lands within 1/4 mile of Colo. River included in  
Wdl. Per. Site Res. 446 ED 9/5/1914

All lands which when sur. will be within legal subdivisions within 1/4 mile of Colo. River included in WP Des. 7 (AR-4) SD 2/9/1917

All land within Boulder Canyon or Black Canyon  
Reservoir sites at less than 1250 feet altitude to  
include when sur. every smallest legal subdivision  
included in Vol. Per. Site Cl. 210 (AR-3) D Intr.  
7/27/1962

DIST. NO. 2

GRAZING DIST. NO. 2

PROTRACTION DIAGRAM NO. 6

MDS 437 SW

PLD 5048 REV VDL SD 1/31/1903 - SEE HI

[illegible]

T. 30N  
R. 17W

SCALE

10 20 30 40

30 chains to the inch

**WARNING STATEMENT**

**WARNING STATEMENT**

This plat is the Bureau's Record of Title, and should be used only as a graphic display of the township survey data. Records hereon do not reflect title changes which may have been effected by lateral movements of rivers or other bodies of water. Refer to the cadastral surveys for official survey information.